

**KEY**

FIRE WALL OR ROOF METAL CORNICE  
 FIRE WALL OR ROOF WOOD CORNICE  
 FIRE WALL OR ROOF FRAME PARTITION  
 OPENING WITH IRON DOOR  
 WINDOW WITH SHUTTERS  
 WINDOW WITH 2ND STOREY  
 WINDOW WITH 3RD STOREY  
 WINDOW WITH 4TH STOREY  
 WINDOW WITH 5TH STOREY  
 WINDOW WITH 6TH STOREY  
 WINDOW WITH 7TH STOREY  
 WINDOW WITH 8TH STOREY  
 WINDOW WITH 9TH STOREY  
 WINDOW WITH 10TH STOREY

STABLE BUILDINGS COLLORED YELLOW ARE FRAME  
 RED BRICK  
 BLUE STONE  
 GRAY IRON  
 BROWN FIRE PROOF

⊙ INDICATE RELATIVE HEIGHTS  
 \* FIRE STATION AS SHOWN ON KEY MAP  
 ALTERNATE STREET NUMBERS ARE ACTUAL  
 CONSECUTIVE STREET NUMBERS ARE ARBITRARY

**WATER FACILITIES:**  
 Water from 3 wells, two 200 bbl cisterns, one 1000 bbl cistern & Fall Creek.

**FIRE DEPT:**  
 Volunteer, 30 men, 1 H&L truck, 1 old hand pump, 1 hand hose wagon, 1 hand gas engine, 1,200 ft hose, fire alarm bell at engine house.

Principal streets bricked & macadamized, others graded.  
 Public lights electric.  
 No fire limits.



6839  
 (55 FEET)  
 1  
 MAY 27 1914  
 C&G 26454

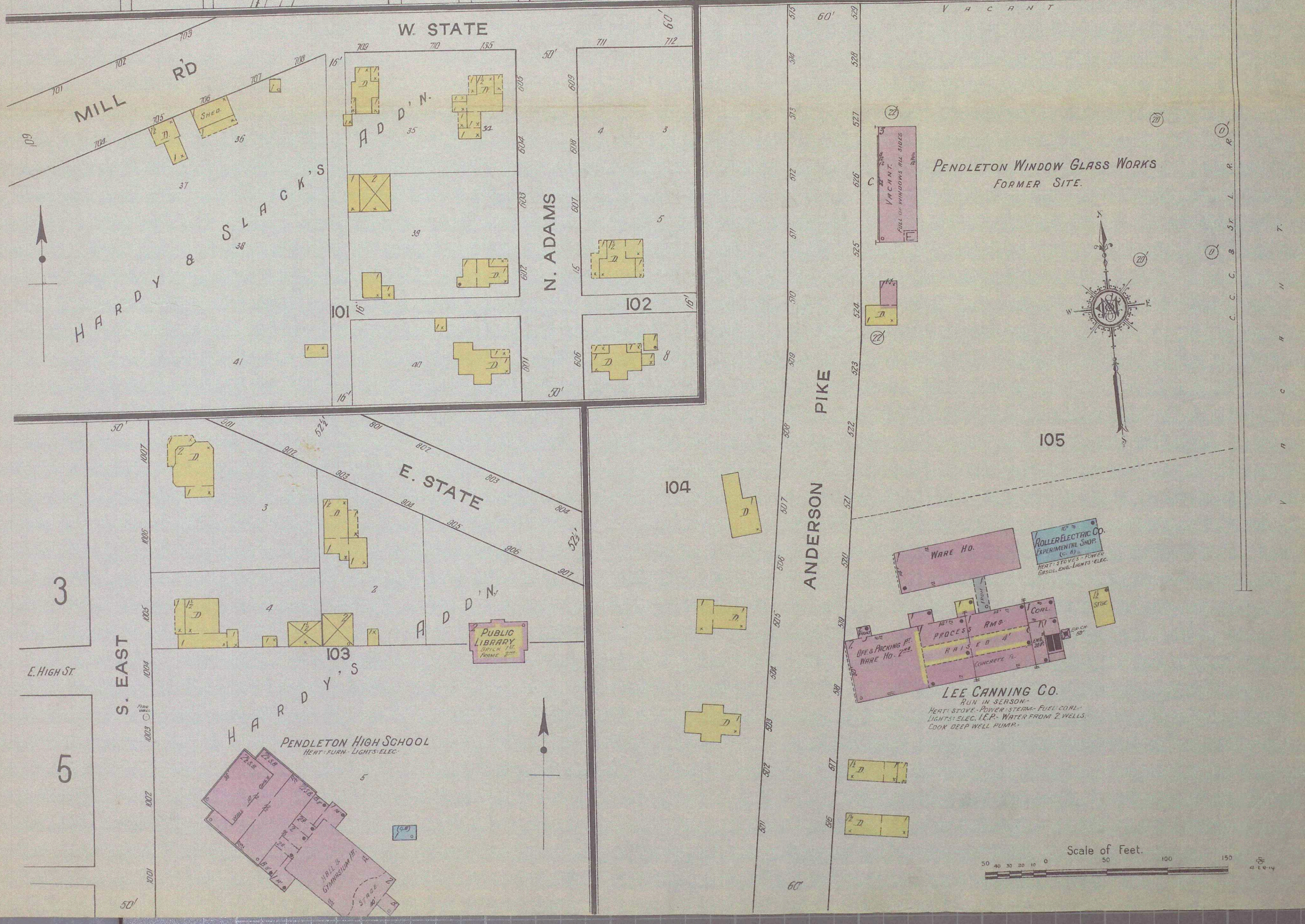
**INDEX**

STREETS	NUMBER	STREETS	NUMBER
Adams, N.	1	Pearl	5
Anderson Pike	1	Pendleton Ave., N.	1-35
Broadway, N.	1-36	"	2-38
" S.	1-30	"	27-105
"	32-105	"	40-104
Caroline, N.	1-36	"	191-202, arbitrary
" S.	1-32	"	1-31
East, N.	1-50	"	2-32
" S.	2-24	State, E.	1-74
Elm, E.	1-100	" W.	801-907, arbitrary
" W.	101-1007, arbitrary	"	1-92
High, E.	1-63	Taylor	4
" W.	2-73	"	4
"	1-83	Water, E.	3
"	33-82	" W.	1-40
John, N.	1-36	West, N.	1-38
" S.	1-30	"	1-32
Main, N.	1-40	"	33-98
" S.	1-32	"	801-818, arbitrary
Mill Road	701-713, arbitrary		

SPECIALS	NUMBER
Aiman, W. H., Elevator	3
C. C. C. & St. L. R. R. Freight Station	3
Columbia Hotel	2
Electric Light Sub-station	5
Fire Department	3
First Christian Church	4
Methodist Episcopal Church	2
U. B. Church	3
Universalist Church	2
Hardy M'f'g Co., Machine and Tin Shop	3
Lee Canning Co.	1
Pendleton High School	1
Steam Laundry	3
Window Glass Works (formerly)	1
Post Office	2
Public Library	1
School	4
Roller Electric Co.	1
Skating Rink	2
Taylor & Brown, Elevator and Planing Mill	4
White Star Mills, Corn and Feed Mills	3

\* Indicates only one side of Street shown.



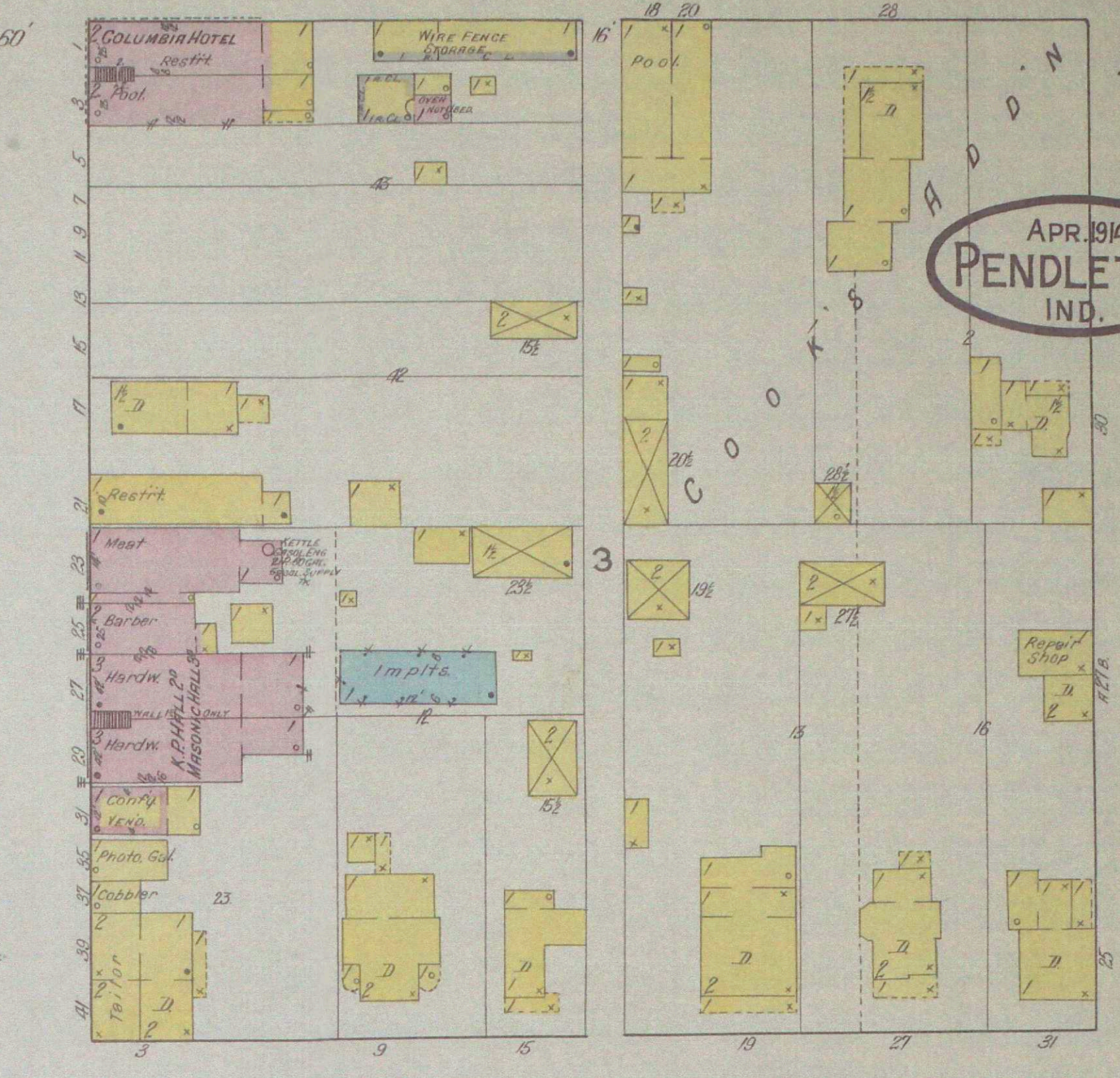
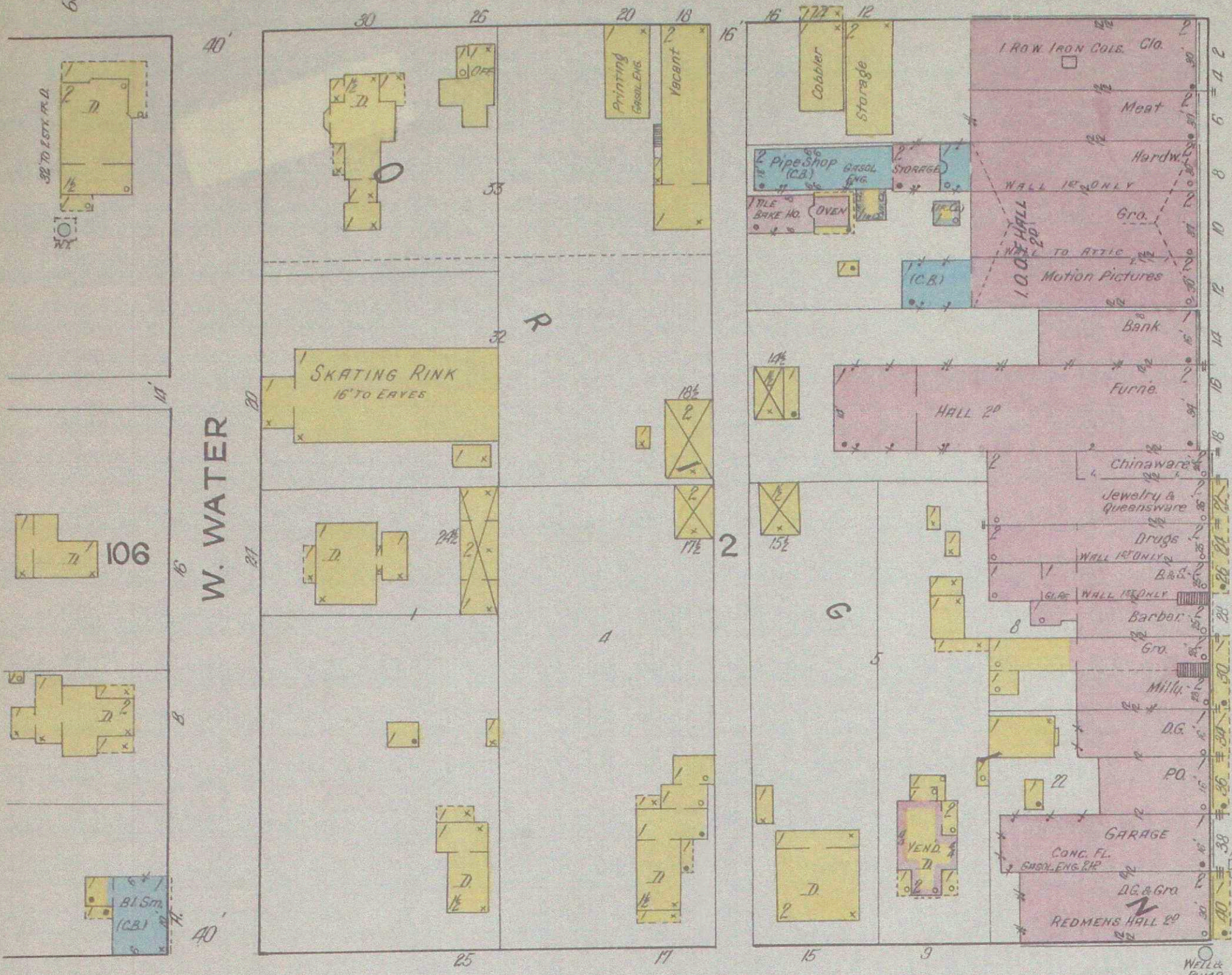


N. PENDLETON AV.

3

S. PENDLETON AV.

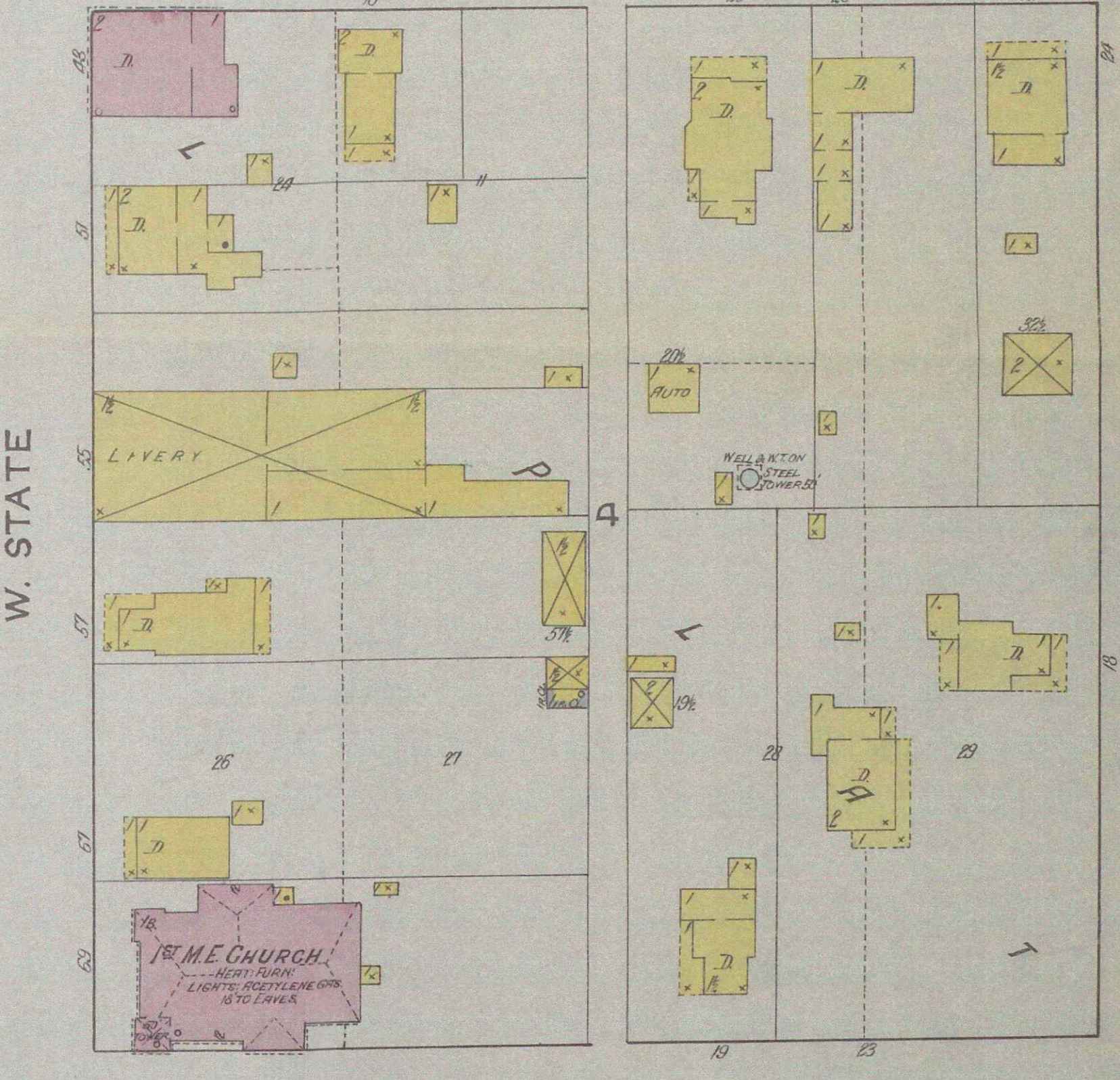
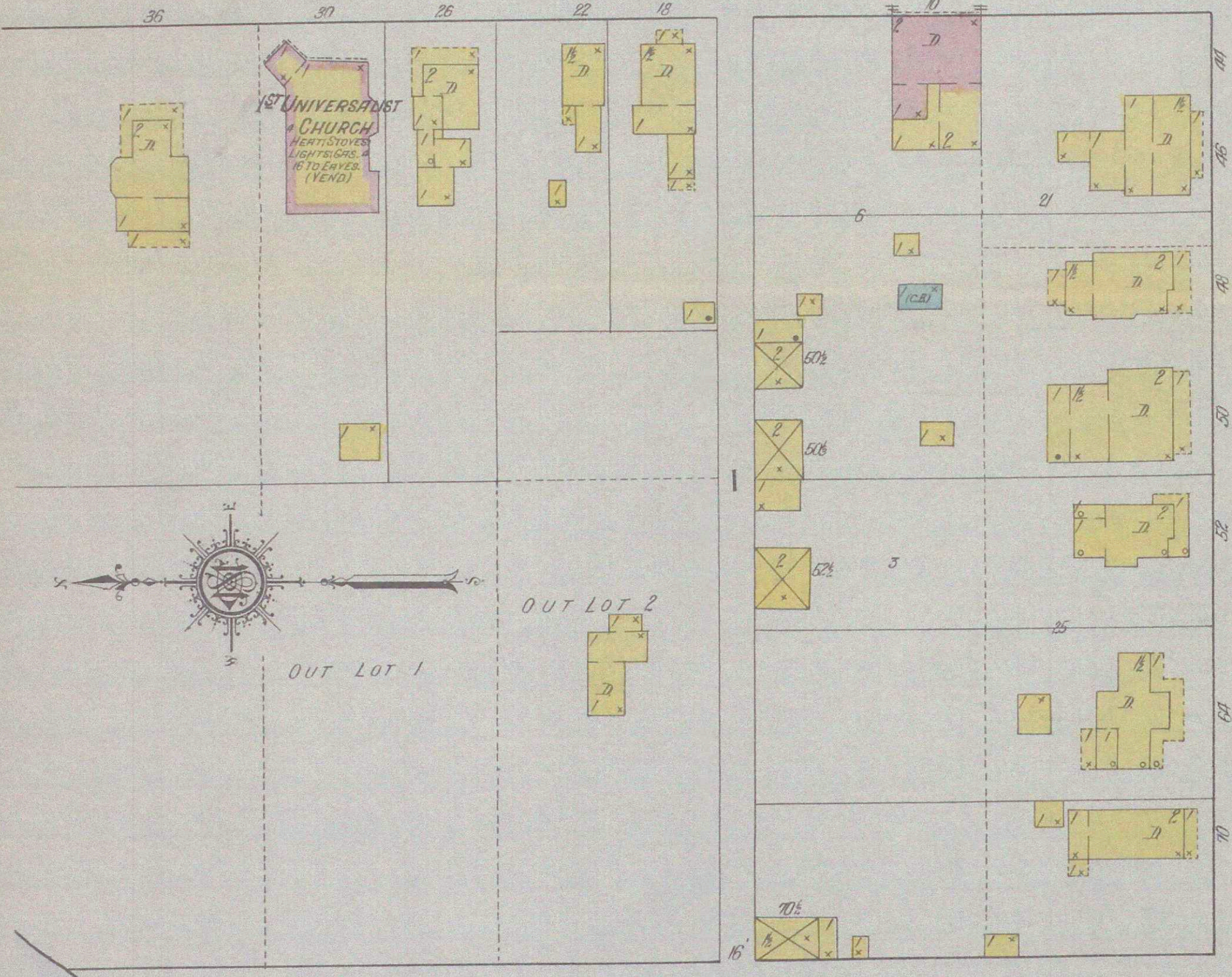
2



APR 1914  
PENDLETON  
IND.

N. MAIN

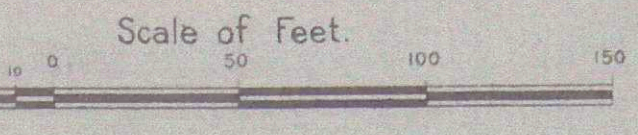
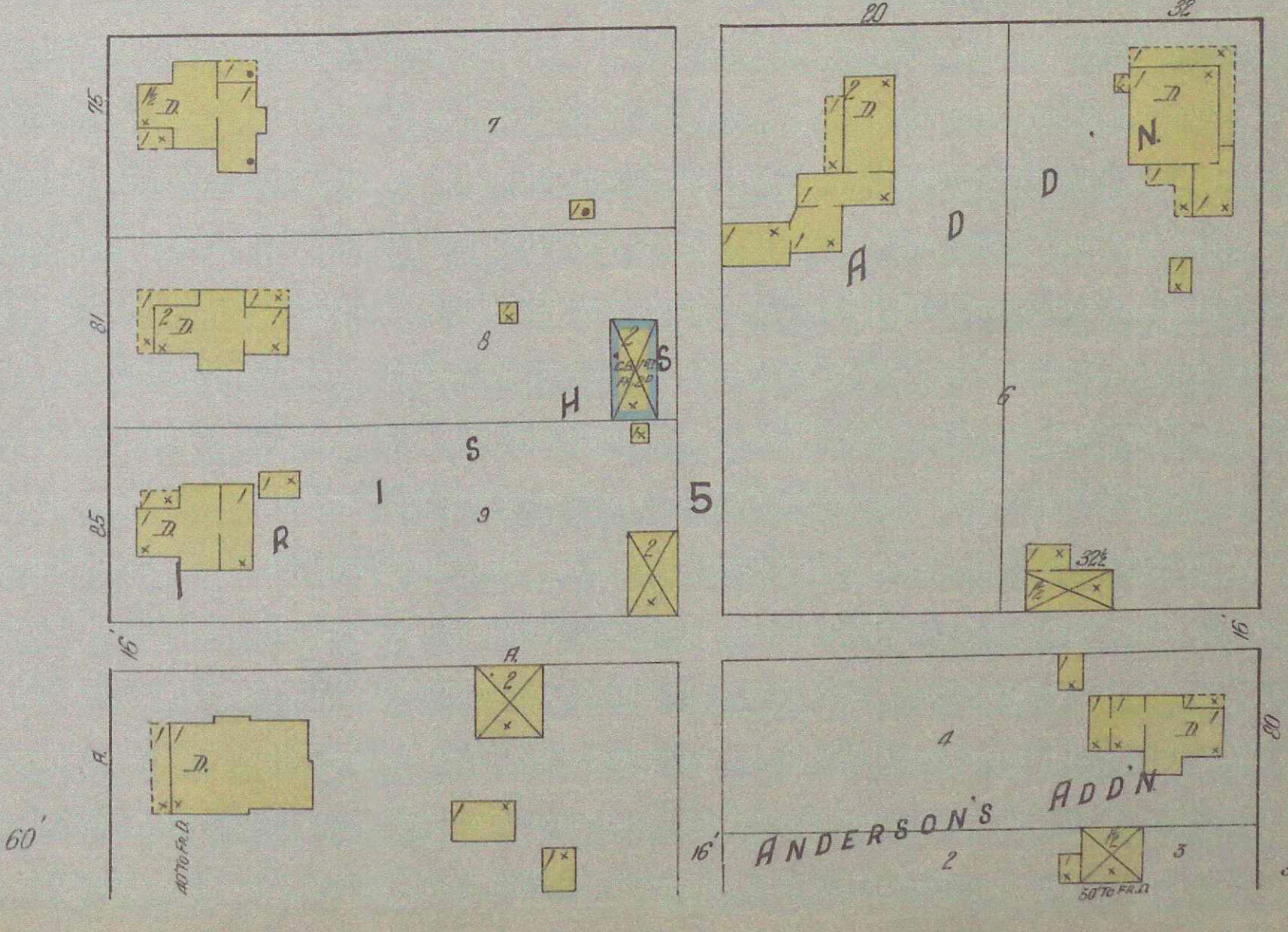
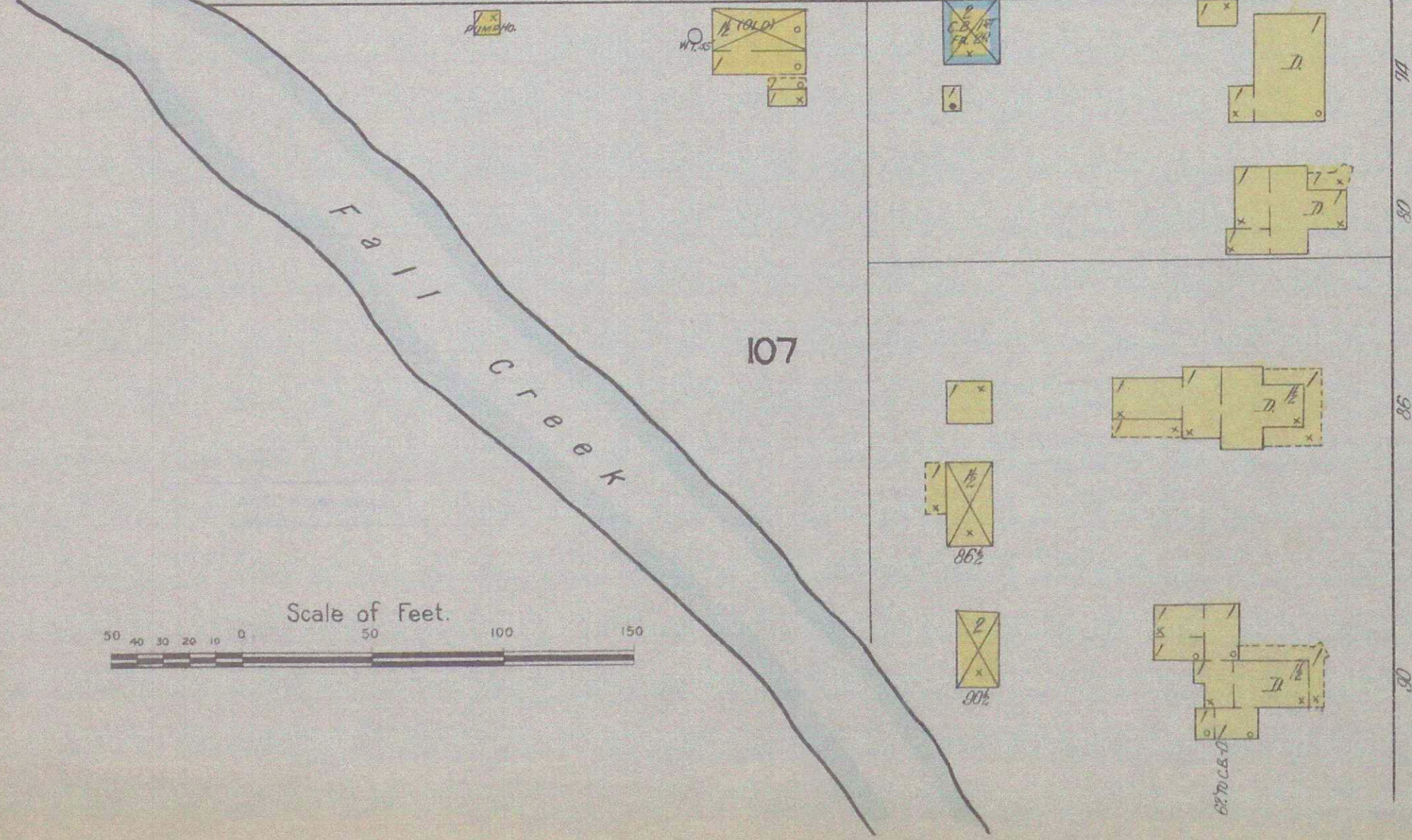
S. MAIN



4

N. WEST

S. WEST





APR. 1914  
PENDLETON  
IND.



Scale of Feet  
0 50 100 150

N. PENDLETON AV.

S. PENDLETON AV.







