

KEY

- FIRE WALL ON ANY ROOF
- METAL CORNICE
- FIRE WALL ON ANY ROOF
- WOOD CORNICE
- FIRE WALL ON ANY ROOF
- FRAME PARTITION
- OPENING WITH IRON DOOR
- STANDARD
- WINDOWS & IRON SHUTTERS
- WINDOW 12 STORY
- WINDOWS 11 & 13 STORIES
- 2 1/2 STORIES
- 2 1/2 STORIES

STABLE BUILDINGS COLORED YELLOW ARE FRAME
 RED BRICK
 BLUE STONE
 GRAY IRON
 BROWN ADORNE
 GREEN SPECIALS

(S) INDICATE RELATIVE HEIGHTS
 FIRE STATION, AS SHOWN ON KEY MAP
 ALTERNATE STREET NUMBERS ARE ACTUAL
 CONSECUTIVE STREET NUMBERS ARE ARBITRARY

WATER FACILITIES
 Water from Wells and Cisterns

FIRE DEPT
 Volunteers. No paid men. 1 E.L. Truck. 1 Hand Pump. 700' 2 1/2" Hose and 500' 2" Hose. 12 Buckets. Fire Alarm bell at Eng. Co. Ho. Streets graveled. Natural Gas in general use for heat and light.

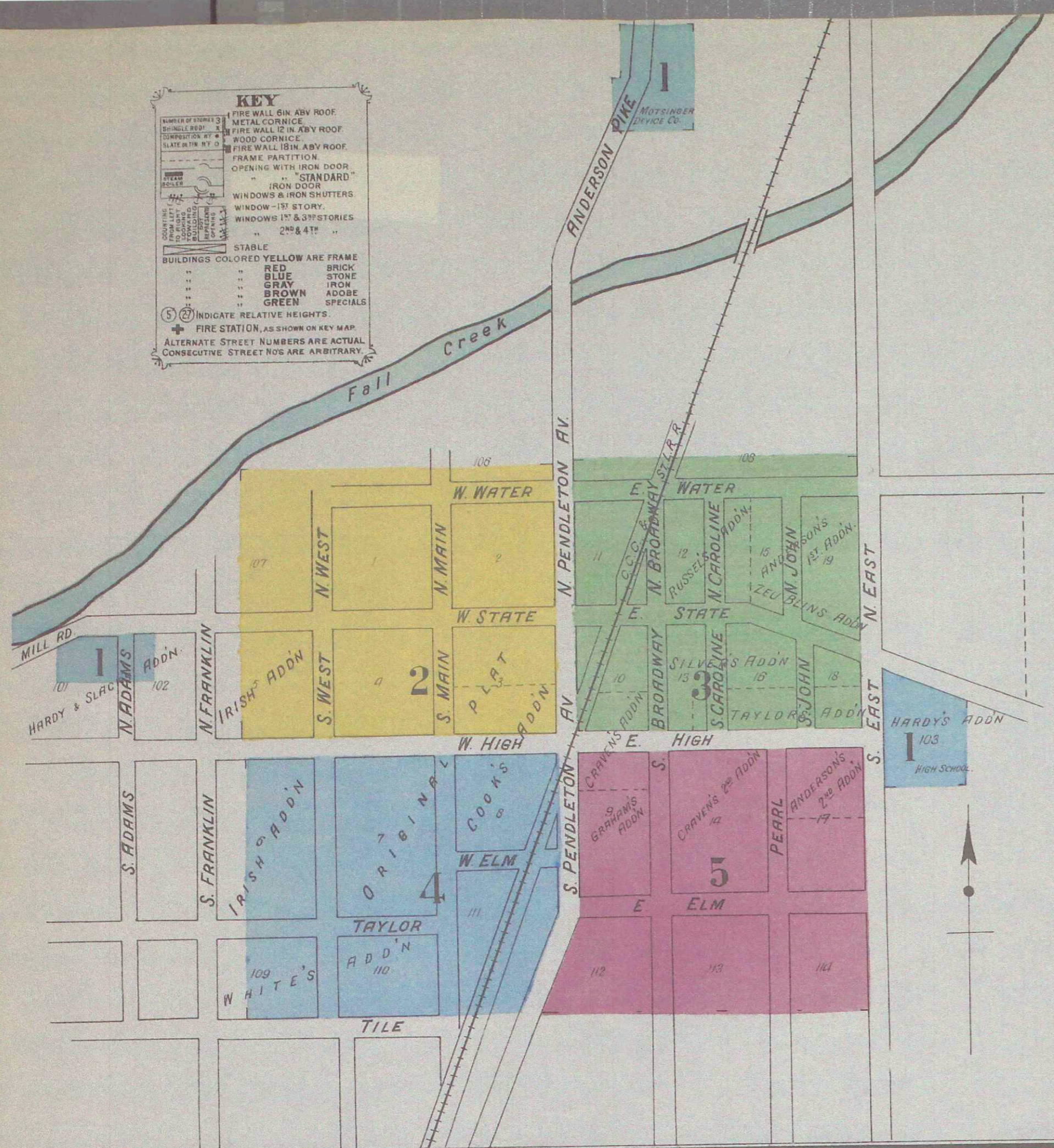
SANBORN MAP COMPANY
 POPULATION 2500
 PREVALING WINDS W & S.W.
 WATER FACILITIES, SEE NOTE
 NO STEAM & NO HAND ENGINE
 NO INDEPENDENT ROSE CART
 ONE TRUCK & LEADER TRUCK

PENDLETON
 MADISON CO. INDIANA
 JANUARY 1908 TO INDIANA
 11 BROADWAY, NEW YORK

Copyright 1908 BY THE SANBORN MAP COMPANY

Map Division
 APR 6 1908
 Library of Congress

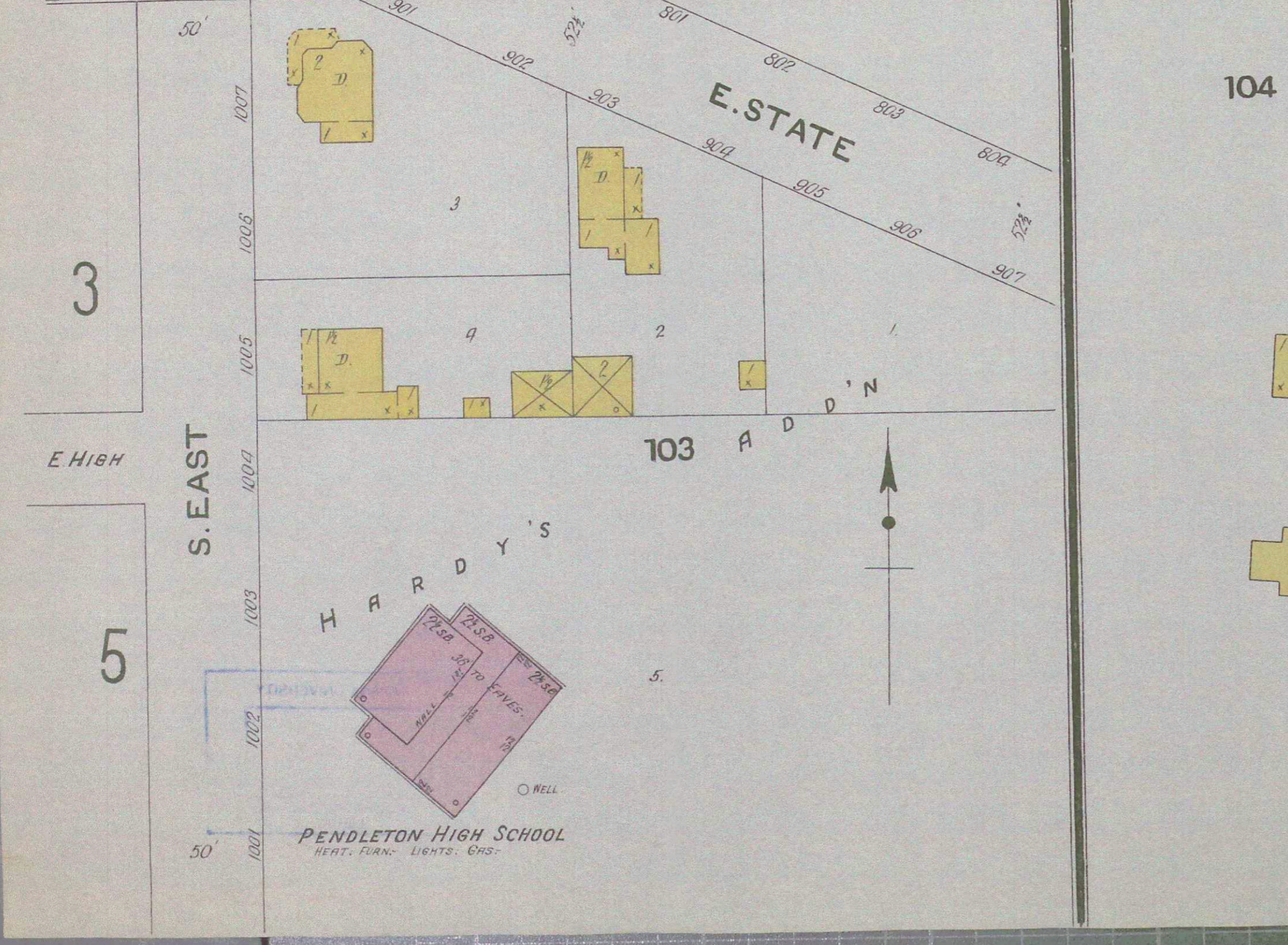
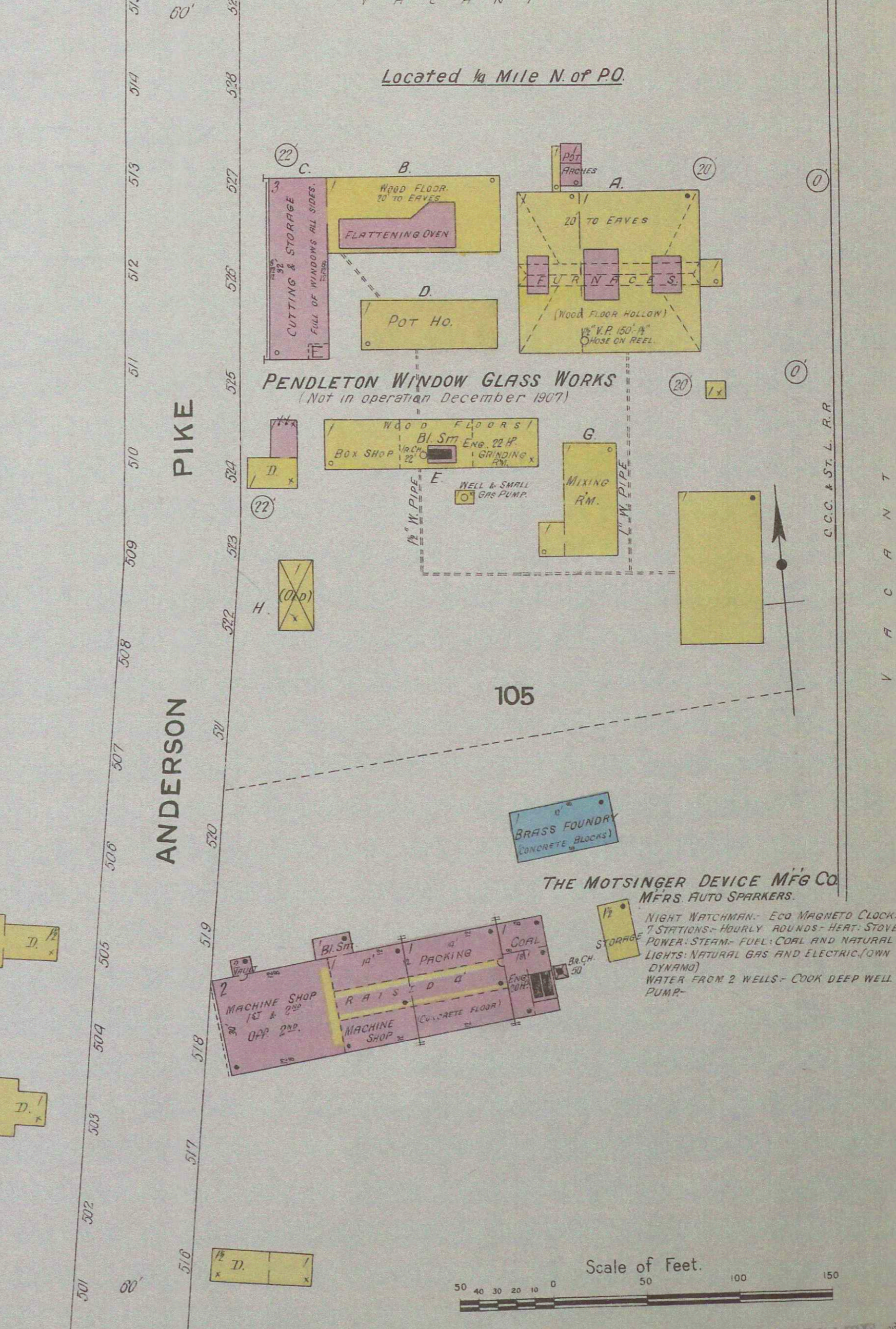
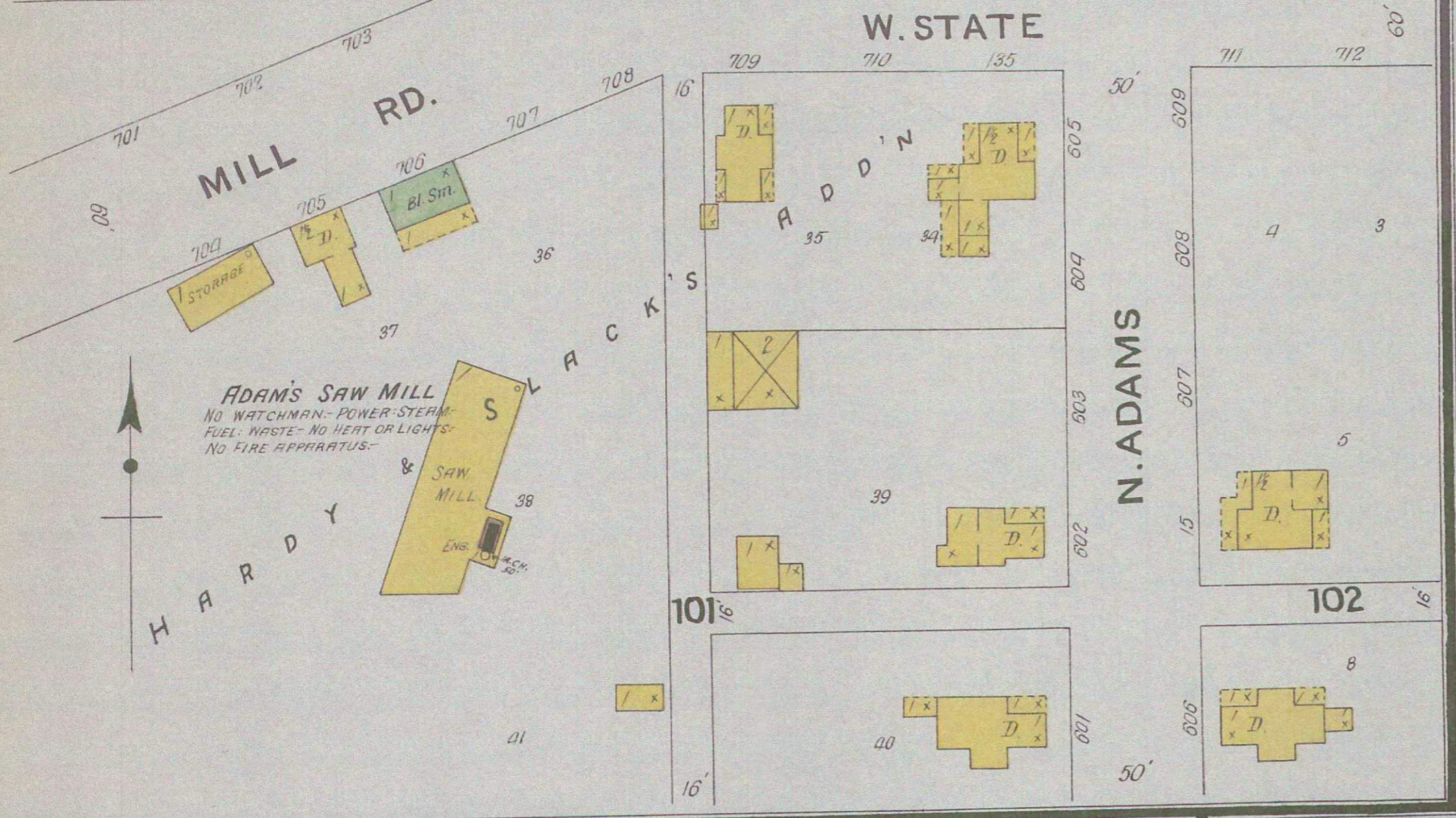
MADE IN U.S.A.
 MAR 29 1908
 WASHINGTON
 12 108



INDEX.

STREETS.	NUMBER	NUMBER	NUMBER
Adams, N.	1-98	5	C. C. C. & St. L. R. R. Passenger Station, 3
Anderson Pike	1-31	*3	Columbia House, 3
Broadway, N.	2-30	*2	F
Caroline, N.	3-35	*5	Fire Department, 3
East, N.	1-44	*3	First Christian Church, 3
Elm, E.	1-12	*5	Methodist Episcopal Church, 3
High, E.	1-61	*5	U. B. Church, 3
John, N.	1-36	*3	Universalist Church, 2
Main, N.	1-36	*3	Jail, 3
Mill Road	37-106	*4	M
			Montsinger Device Mfg Co., 1
			P
			Pendleton High School, 1
			Milling Co., 3
			Steam Laundry, 3
			Window Glass Works, 1
			Public School, 4
			S
			Skating Rink, 2
			Swoeland & Wagner, Machine Shop, 3
			T
			Taylor & Brown, Elevator, 4
			Planing Mill, 4
			W
			Wagner & Parsons, Vault Factory, 3
			White Star Mills, 3

* Indicates only one side of street shown.





N. PENDLETON AV.

S. PENDLETON AV.

N. MAIN

S. MAIN

N. WEST

S. WEST

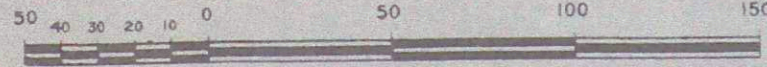
W. WATER

W. STATE

W. HIGH

JAN. 1908
PENDLETON
IND.

Scale of Feet.



106

107

3

2

3

4

5

ANDERSON'S ADDN.



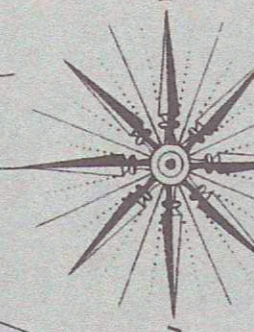
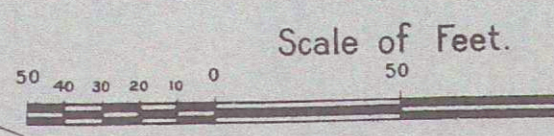
JAN. 1908
PENDLETON
 IND.

E. WATER

E. STATE

E. HIGH

108



THE PENDLETON MILLING CO. INC.
 NO WATCHMAN - FUEL & LIGHT NATURAL GAS - POWER - NATL. GAS ENG. 20 HP -
 FROM WELL - NO FIRE APPARATUS -
 MACHINERY - 18" FL. CORN SHELLER - 1 WHEAT CLEANER -
 20 FL. SPARITERS - 1 CENTRIFUGAL REEL - 1 WHEAT SHUTTER
 1 BRAN DUSTER - 1 CYCLONE DUST COL. -
 30 FL. 25" STEEL ROLLERS - 1 MILL GRINDER - 1 SEPARATOR - 1 COCKLE MACHINE -
 30 FL. 25" STEEL ROLLERS

W.H. AIMAN, ELEVATOR.
 CAPCY 30000 BUSHELS.
 16 BINS 8 OF WHICH ARE CRIBBED - NO WATCHMAN -
 FUEL & LIGHTS - NATURAL GAS - POWER - NATL. GAS ENG. 20 HP -
 NO FIRE APPARATUS -
 MACHINERY - 18" FL. CORN SHELLER - 1 WHEAT CLEANER -
 1 CLOVER SEED CLEANER - 6 STAND ELEVATORS -

WHITE STAR MILLS - CORN & FEED MILLS
 NO WATCHMAN - FUEL & LIGHT NATURAL GAS
 HEAT - STOVE - WATER BLS. & PAILS DISTRIB.
 MACH. 14" FL. FEED MILL -
 20" FL. 1 MEAL ROLL -
 20" FL. 1 CORN SHELLER & CLEANER -
 1 SIFTER -

N. PENDLETON AV.

2

S. PENDLETON AV.

DUPLICATE

JAN 1908
PENDLETON
IND.

S. PENDLETON

5

AV.

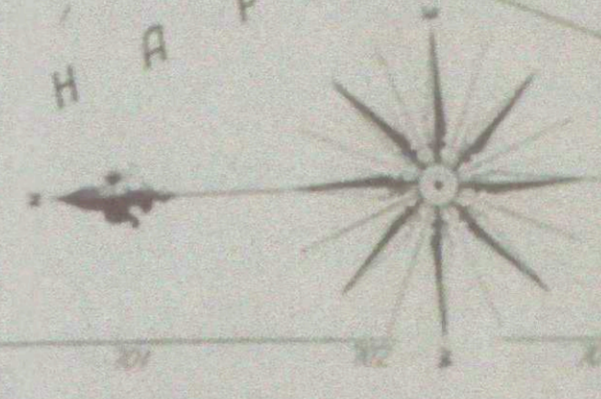
TAYLOR & BROWN, ELEVATOR

TAYLOR & BROWN, PLANING MILL

W. ELM

S. MAIN

CHAPMAN'S



W. HIGH

2

TAYLOR

TILE

S. WEST

109

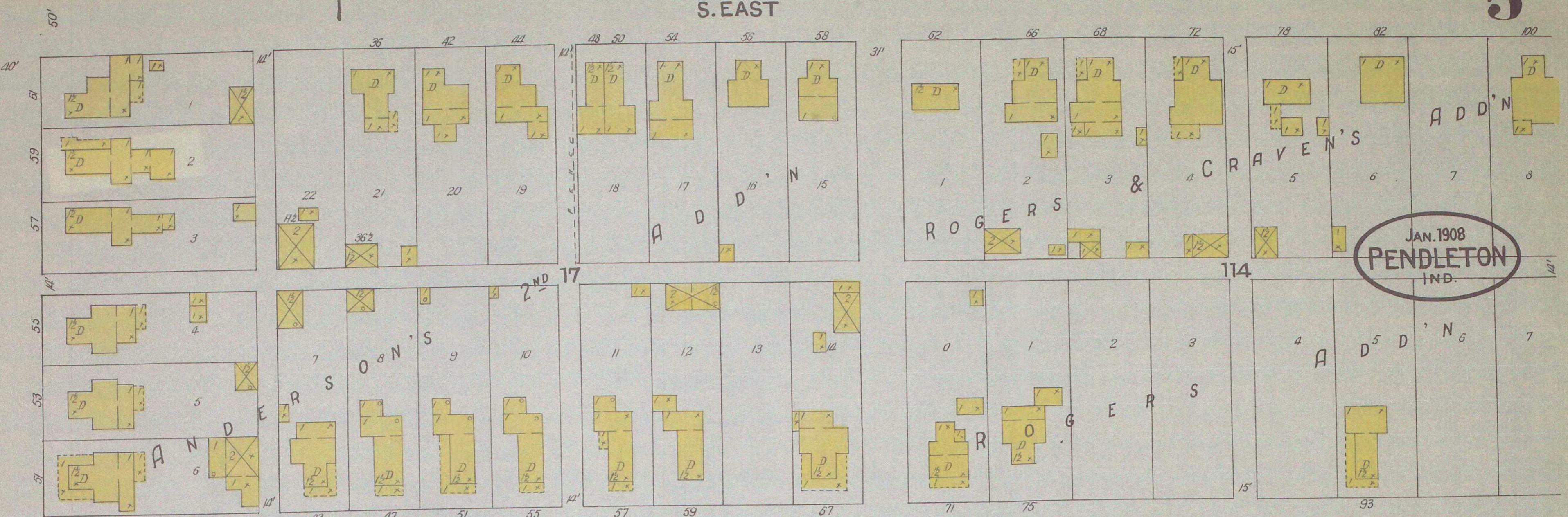
Scale of Feet

TRIPlicate

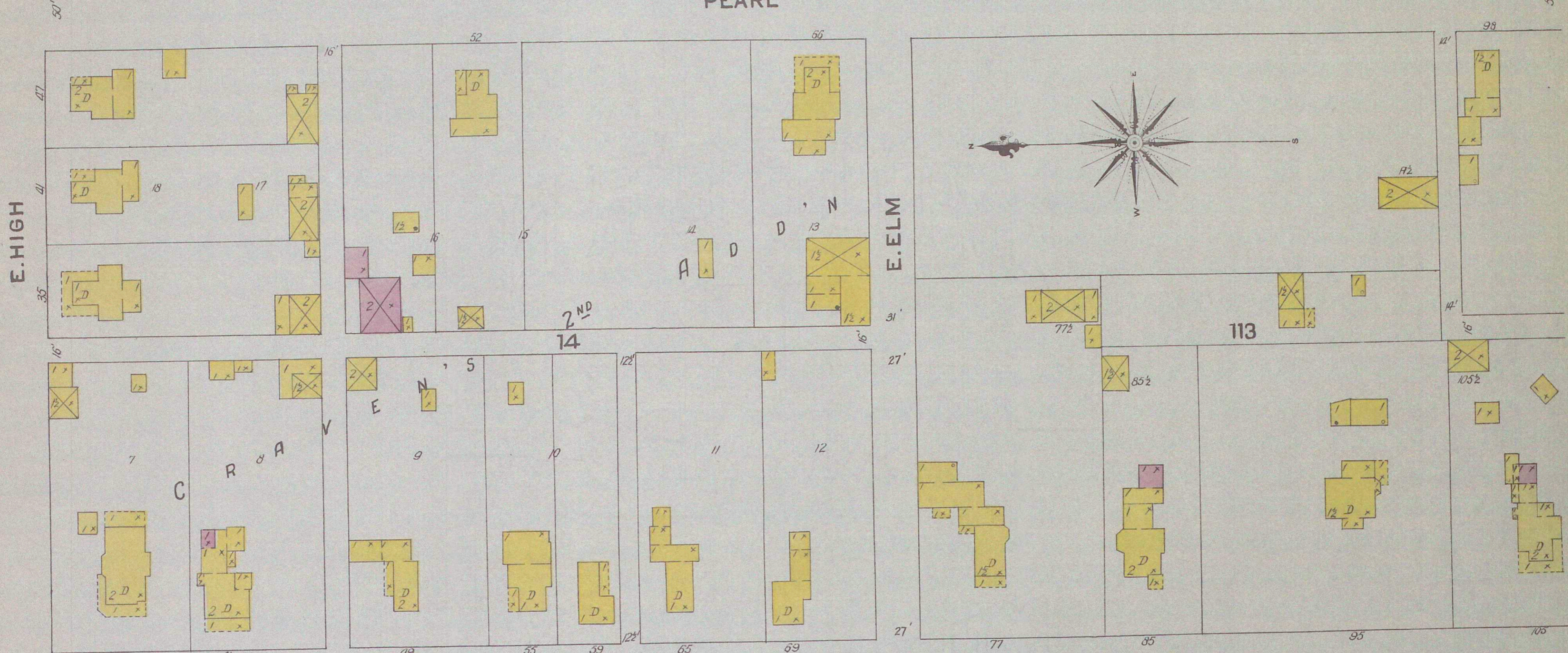


S. EAST

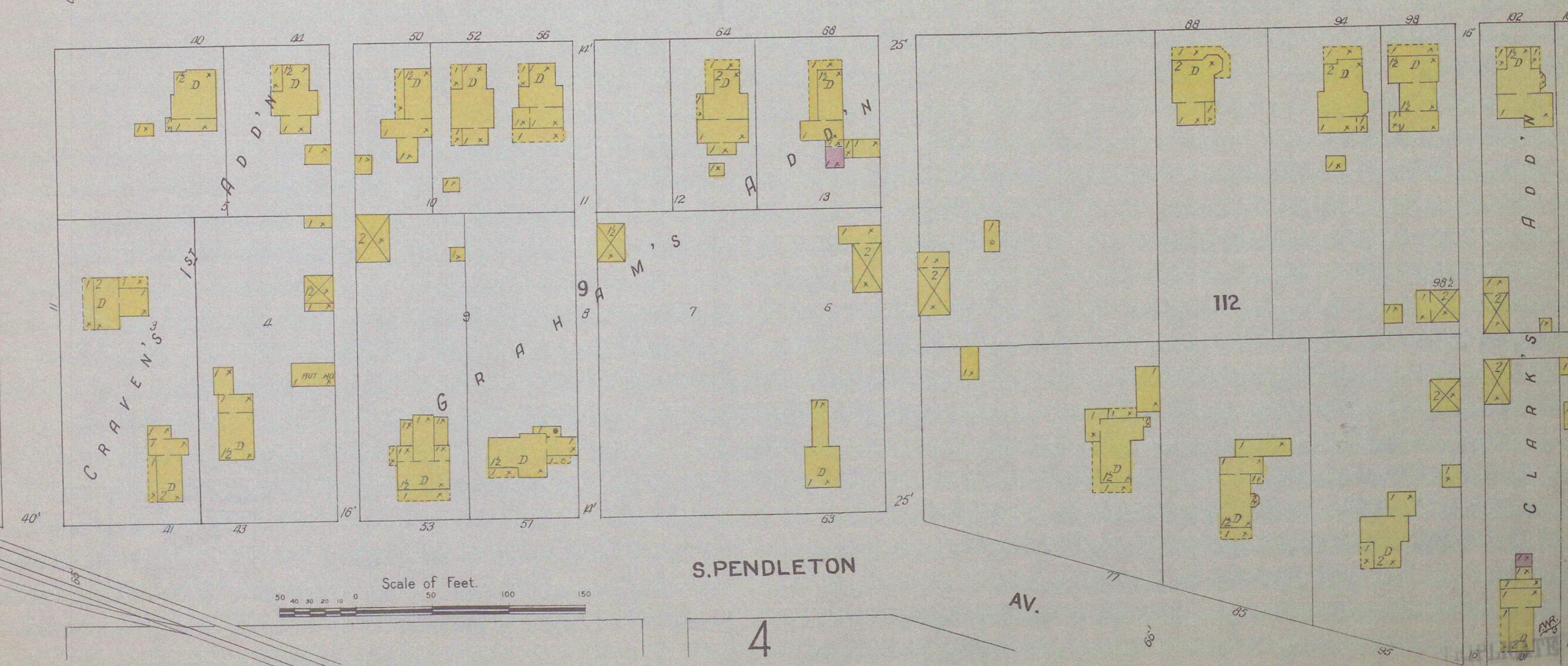
1



PEARL

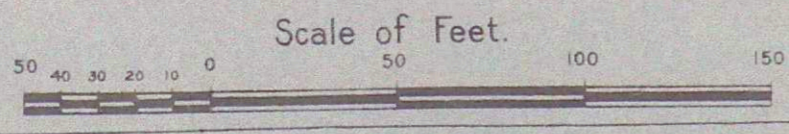


S. BROADWAY



S. PENDLETON AV.

4



CAROLINE ST.

3

AV.