

WE NEED YOUR HELP

To ensure that the Pendleton Waterworks continues to provide you with high quality and safe drinking water, we are asking for your assistance by completing the survey on the back about the type of service line that is inside your home or building.

A water service line is the water pipe that connects your homes/businesses to a water meter.

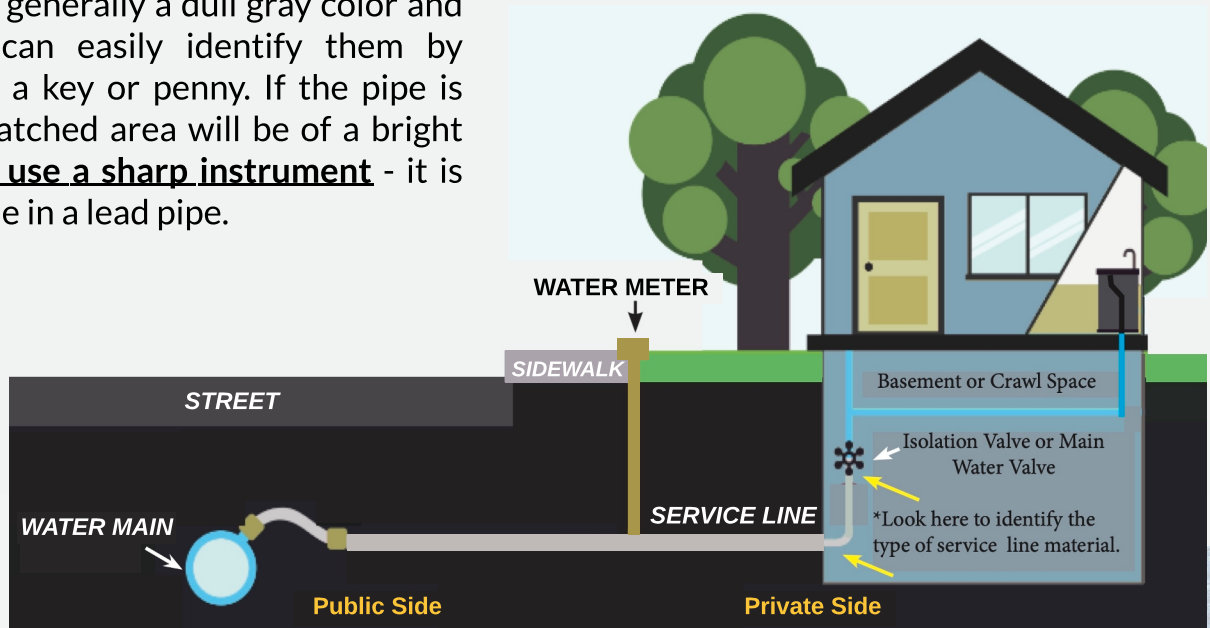
The Environmental Protection Agency (EPA) and the Indiana Department of Environmental Management (IDEM) require that public water utilities identify lead water service lines entering homes and buildings.

Please complete the survey on the back of this document. Even if you do not think that your water service line is made of lead, it is important to complete and return the following survey. If not completed, an alternative means of verification will be necessary; including, door-to-door surveys, verification of the line by excavation, and requesting access for line testing by the Utility.

What do lead service lines look like?

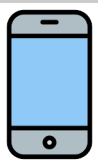
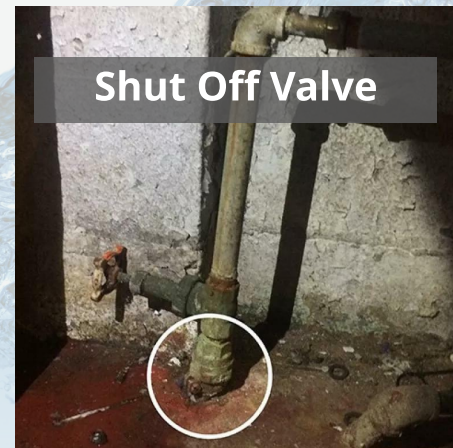
Lead service lines are generally a dull gray color and are very soft. You can easily identify them by scratching them with a key or penny. If the pipe is made of lead, the scratched area will be of a bright silver color. **DO NOT use a sharp instrument** - it is easy to puncture a hole in a lead pipe.

A galvanized pipe can also be a dull gray color when scratched. You can verify if the service pipe is made of galvanized steel with a strong magnet - magnets will not stick to a lead pipe.



Source: www.awwa.org/Portals/0/AWWA/Communications/FINALLeadServiceLineCommonGuide.pdf

Lead service lines can be connected to residential and commercial plumbing using solder and have a solder "bulb" at the end, a compression fitting, or another connector made of galvanized iron, brass, or bronze.



Please scan the QR code to access a video guide on how to locate and identify lead pipes in your home or building.



PLEASE COMPLETE THE FOLLOWING SURVEY REGARDING YOUR WATER SERVICE LINE

Please complete this form and return it to the Pendleton Municipal Utility by:

- Including the completed survey in your monthly payment or
- Dropping it off at the Pendleton Town Hall or
- Scanning the QR code or visiting the link below to complete and submit a digital survey: www.surveymonkey.com/r/PendletonLeadSurvey



Scan to access the survey

Please contact us at 765-778-1301 if need any assistance in identifying lead service lines in your home or business.



PLEASE COMPLETE THE FOLLOWING SURVEY

Property Address: _____

Was your home/building built before 1986? Yes NO Don't Know

I need assistance. Please contact _____ at: (____) _____ - _____
YOUR NAME

The water service line entering my home/business is:

LEAD

PLASTIC/PVC

COPPER

OTHER: _____

GALVANIZED

DON'T KNOW



100 West State Street
P.O. Box 230
Pendleton, IN 46064

Website: town.pendleton.in.us
Phone: 765-778-1301