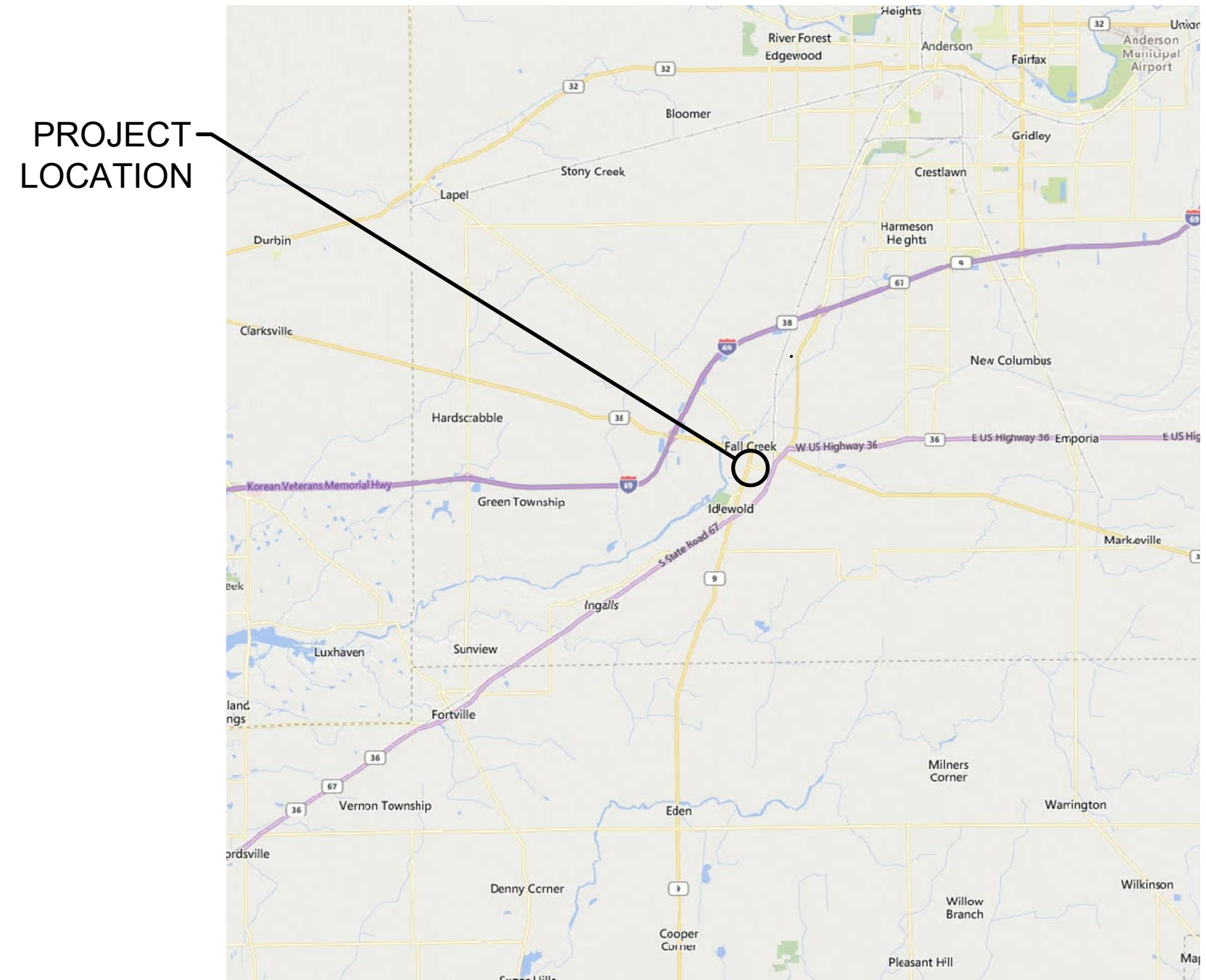


# TOWN OF PENDLETON

## ROADWAY RESURFACING AND REPAIRS

VARIOUS LOCATIONS IN PENDLETON, INDIANA



VICINITY MAP  
NO SCALE



SITE MAP  
NO SCALE



LOCATION MAP  
NO SCALE

OPERATING AUTHORITIES

<p><b>ELECTRIC</b> DUKE ENERGY 100 S. MILL CREEK ROAD NOBLESVILLE, INDIANA 46062 CONTACT: DON MCDUFFY PHONE: 317-776-5320 EMAIL: del-dime-coord@duke-energy.com</p>	<p><b>ELECTRIC</b> NINE STAR CONNECT 2243 E. MAIN STREET GREENFIELD, INDIANA 46140 PHONE: 317-326-3131 EMAIL: engineering@ninestarconnect.com</p>	<p><b>ELECTRIC</b> TOWN OF PENDLETON 100 W. STATE STREET PENDLETON, INDIANA 46064 CONTACT: CRAIG SWITZER PHONE: 765-208-0104 EMAIL: cswitzer@town.pendleton.in.us</p>
<p><b>GAS</b> CENTERPOINT ENERGY 1800 W. 26TH ST MUNCIE, INDIANA 47302 CONTACT: JON EASTHAM PHONE: 765-287-2119 EMAIL: publicproject@centerpointenergy.com</p>	<p><b>SANITARY</b> FALL CREEK REGIONAL WASTE DISTRICT PO BOX 59 PENDLETON, INDIANA 46064 CONTACT: TIM MCCURDY PHONE: 765-778-7544 EMAIL: tmccurdy@fcrwd.com</p>	<p><b>STORM</b> TOWN OF PENDLETON 100 W. STATE STREET PENDLETON, INDIANA 46064 CONTACT: JIM COOK PHONE: 765-208-0097 EMAIL: jcook@town.pendleton.in.us</p>
<p><b>FIBER OPTIC</b> AT&amp;T TRANSMISSION 555 E. COOK STREET SPRINGFIELD, IL 62703 CONTACT: VANESSA ROSS PHONE: 217-381-4284 EMAIL: v2021@att.com</p>	<p><b>FIBER OPTIC</b> EVERSTREAM, LLC (SOUTH) 342 MASSACHUSETTS AVE, SUITE 203 INDIANAPOLIS, IN 46204 CONTACT: EAN ELDER PHONE: 317-532-1766 EMAIL: eelder@everstream.net</p>	<p><b>WATER</b> TOWN OF PENDLETON 100 W. STATE STREET PENDLETON, INDIANA 46064 CONTACT: RYAN BRASHEARS PHONE: 317-315-4252 EMAIL: rbrashears@town.pendleton.in.us</p>
<p><b>SCHOOL DISTRICT</b> SOUTH MADISON COMMUNITY SCHOOL CORPORATION 203 SOUTH HERITAGE WAY PENDLETON, INDIANA 46064 PHONE: 765-778-2152</p>	<p><b>FIRE DEPARTMENT</b> PENDLETON FIRE DEPARTMENT 100 SOUTH BROADWAY PO BOX 230 PENDLETON, INDIANA 46064 PHONE (NON-EMERGENCY): 765-778-2400 EMERGENCY: 911</p>	<p><b>POLICE DEPARTMENT</b> PENDLETON POLICE DEPARTMENT 550 NORTH PENDLETON AVENUE PENDLETON, INDIANA 46064 PHONE (NON-EMERGENCY): 765-778-3933 EMERGENCY: 911</p>
<p><b>TELEPHONE</b> FRONTIER</p>	<p><b>CABLE</b> COMCAST CABLE (INDIANAPOLIS)</p>	

PLANS PREPARED BY:

**BANNING ENGINEERING**  
853 COLUMBIA ROAD, SUITE #101  
PLAINFIELD, IN 46168  
BUS: (317) 707-3700, FAX: (317) 707-3800  
E-MAIL: Banning@BanningEngineering.com  
WEB: www.BanningEngineering.com

CONTACT: PETE RUSCHE  
EMAIL: prusche@banning-eng.com

**CONSTRUCTION DOCUMENTS**

PROJECT MANAGER: \_\_\_\_\_ DATE: \_\_\_\_\_

THESE PLANS ARE NOT TO BE CONSIDERED FINAL OR TO BE UTILIZED FOR CONSTRUCTION UNLESS SIGNED AND DATED BY THE APPROPRIATE BANNING ENGINEERING PROJECT MANAGER.

THESE PLANS ARE NOT INTENDED TO BE REPRESENTED AS A RETRACEMENT OR ORIGINAL BOUNDARY SURVEY, A ROUTE SURVEY, OR A SURVEYOR LOCATION REPORT.

PLANS PREPARED FOR:  
TOWN OF PENDLETON  
100 WEST STATE STREET  
PENDLETON, IN 46064  
765-778-2173  
CONTACT: SCOTT RESKE  
TOWN MANAGER

REVISIONS		
NUMBER	DESCRIPTION	DATE

SHEET INDEX	
SHEET NO	DESCRIPTION
C001	TITLE SHEET
C002	GENERAL NOTES & DETAILS
C100	JEFFERSON STREET
C101	ELM STREET
C102	HIGH STREET
C103	ANGLE ROAD
C104	S 425 W

CERTIFIED BY: **BID SET**

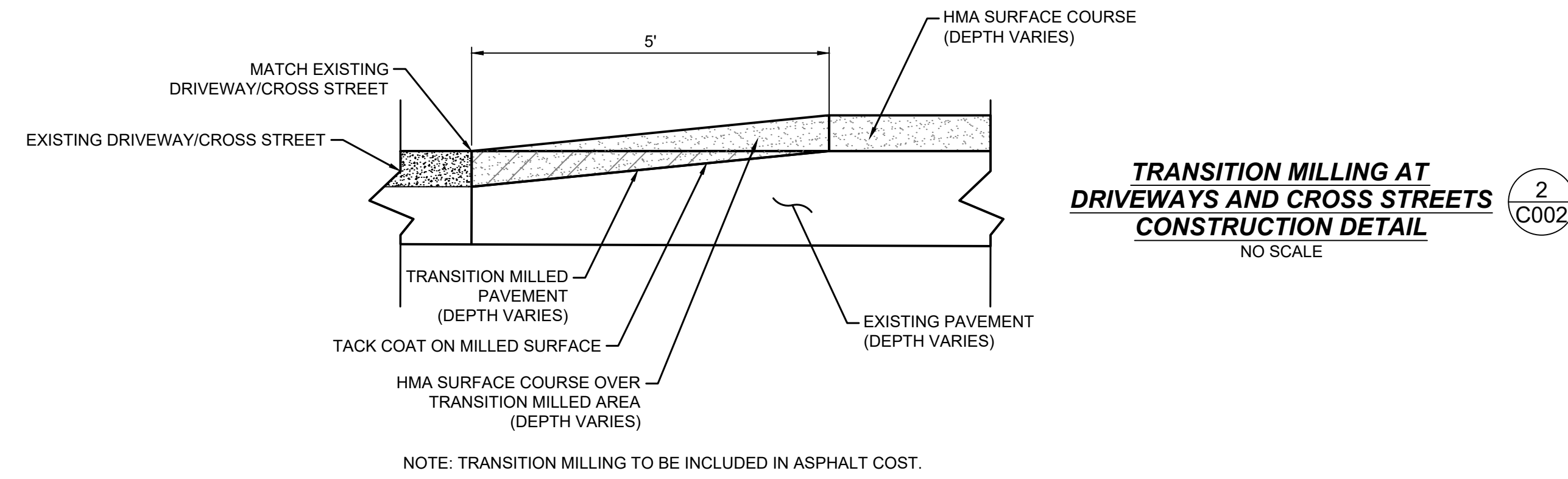
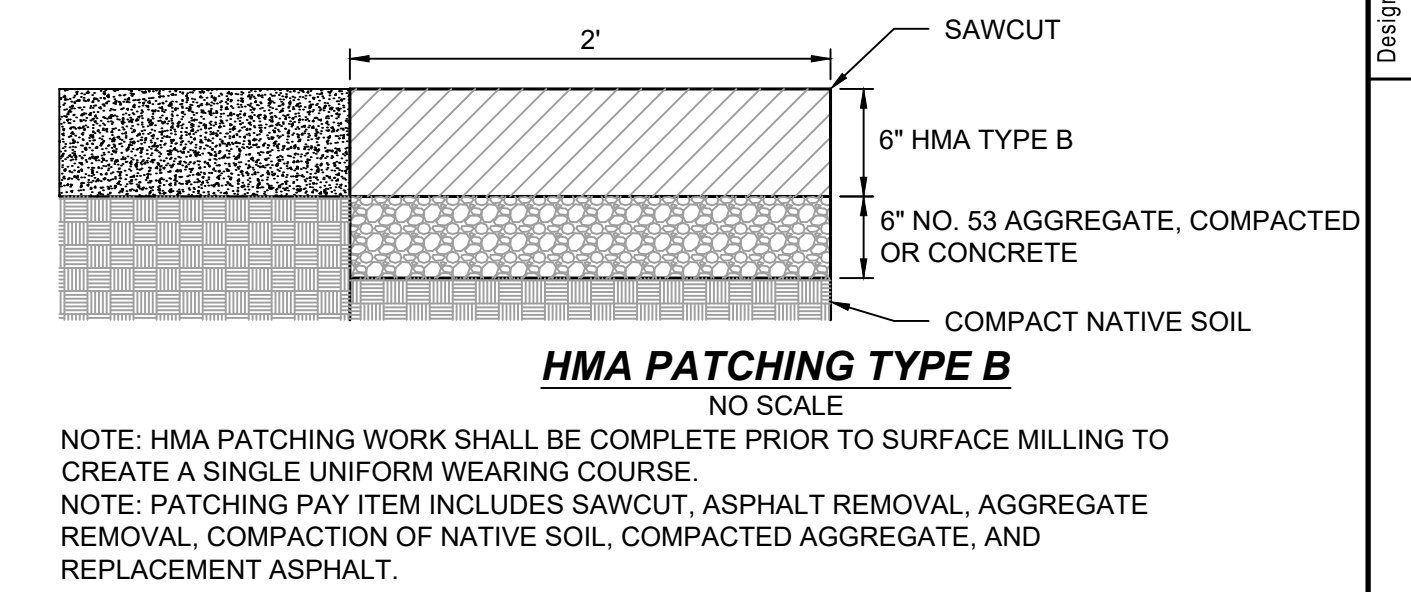
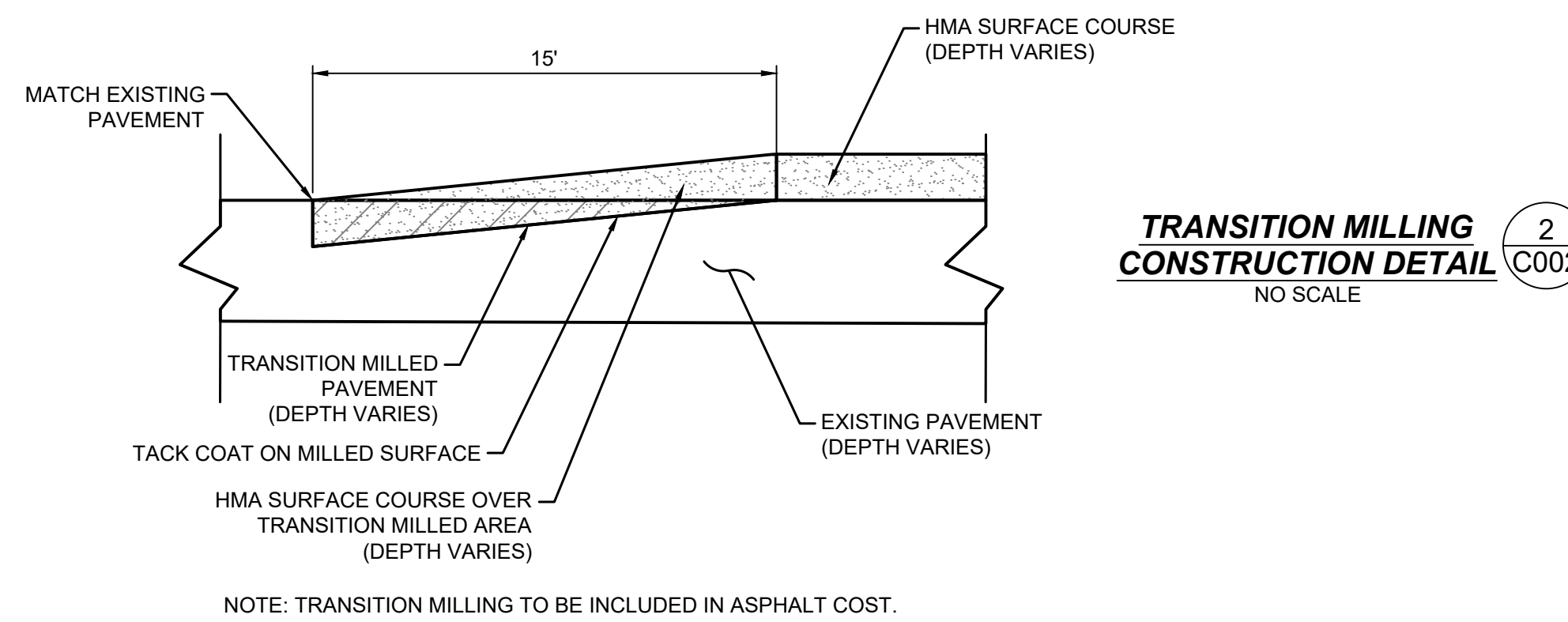
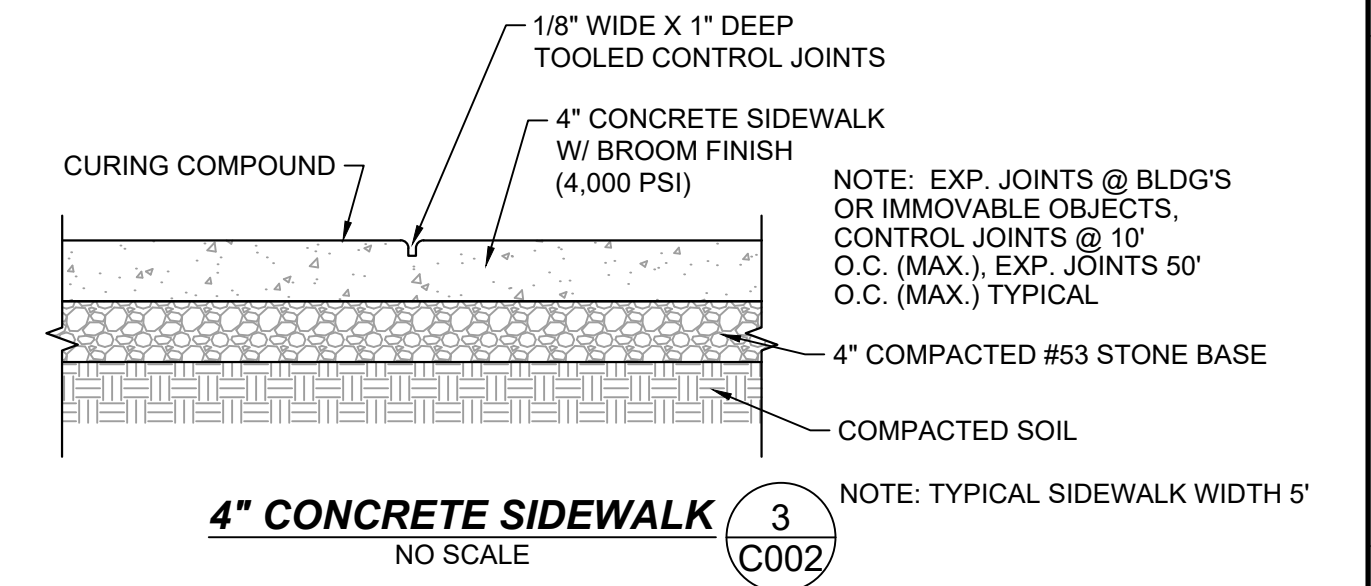
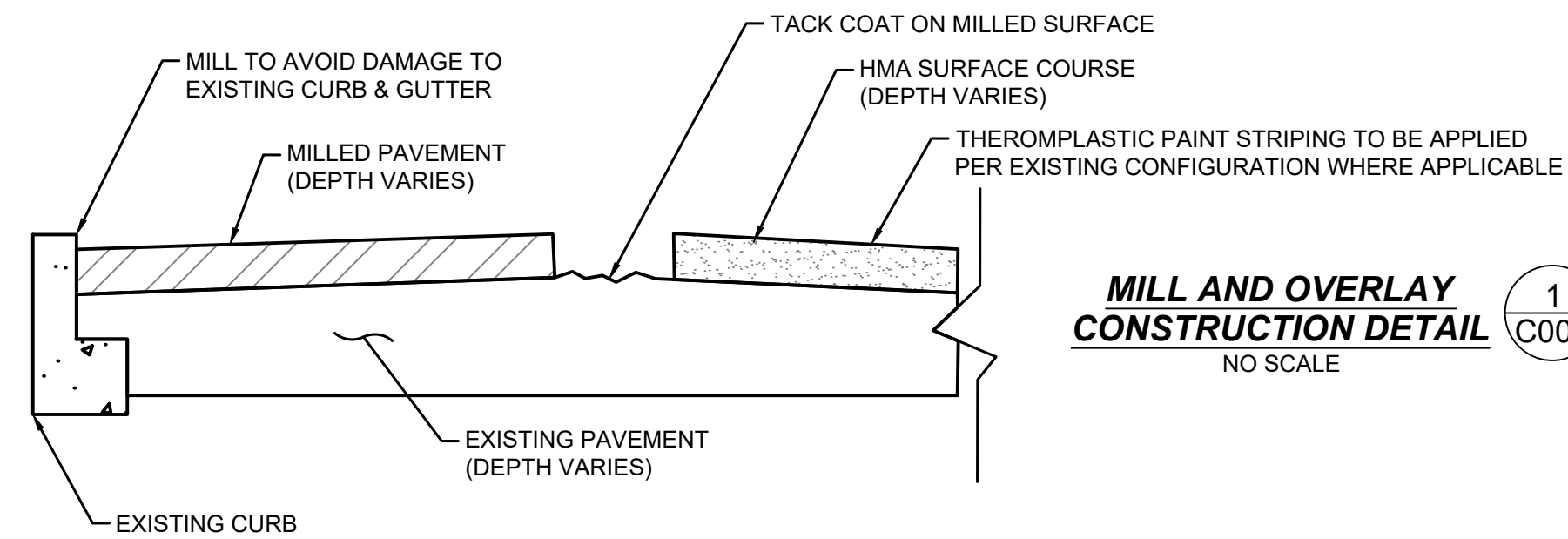
**NOT FOR CONSTRUCTION**

Date:	2/20/2023
Project No:	22291
Sheet No:	C001



**GENERAL NOTES:**

- CONSTRUCTION SHALL BE IN ACCORDANCE WITH THE SPECIFICATIONS INCLUDED IN THE BID PACKAGE.
- MILLING AND RESURFACING LIMITS ARE AS SHOWN ON THE PLANS UNLESS OTHERWISE SPECIFIED EXCEPT FOR ROADWAYS ADJACENT OR CONNECT TO STATE RIGHT OF WAY (ROW) OR RAILROAD ROW. NO WORK IS TO BE PERFORMED IN THE STATE OR RAILROAD ROW.
- IN AREAS WITH EXISTING CURB ADJACENT TO THE MILLING AND RESURFACING WORK, CARE IS TO BE TAKEN TO PRESERVE THE EXISTING CONDITION OF THE CURB. THE CONTRACTOR IS RESPONSIBLE FOR DAMAGE TO THE ADJACENT CURB AND SHALL REPLACE THE DAMAGED AREAS AT NO COST TO THE TOWN.
- MAINTENANCE OF TRAFFIC (MOT) IS THE RESPONSIBILITY OF THE CONTRACTOR. THE CONTRACTOR SHALL PROVIDE ACCESS TO RESIDENCES AND BUSINESSES DURING THE ENTIRE CONSTRUCTION PERIOD. MOT DEVICES SHALL CONFORM TO THE GUIDELINES SHOWN IN THE LATEST EDITION OF THE INDIANA MANUAL ON UNIFORM TRAFFIC CONTROL DEVICES (IN MUTCD). MOT LANE CLOSURE METHODS AND PROCEDURES ARE SUBJECT TO REVIEW AND APPROVAL OF THE OWNER OR OWNER'S REPRESENTATIVE.
- THE WORK IS GENERALLY LOCATED IN RESIDENTIAL AREAS. THE CONTRACTOR SHALL NOTIFY ALL RESIDENTS ADJACENT TO THE WORK SITE IN WRITING NO LESS THAN 48 HOURS PRIOR TO THE COMMENCEMENT OF WORK.
- AT THE END OF EACH DAY OR WHEN THE WORK IS TO BE DISCONTINUED FOR A PERIOD OF TIME THE CONTRACTOR SHALL INSTALL A TAPERED JOINT AT THE END OF PAVING TO ALLOW TRAFFIC A TRANSITION.
- IF THE MILLED SURFACE IS TO LAY EXPOSED FOR MORE THAN 8 HOURS, THEN THE SURFACE SHALL BE CLEANED TWICE, DIRECTLY AFTER MILLING AND DIRECTLY BEFORE THE APPLICATION OF THE TACK COAT.
- THE CONTRACTOR IS RESPONSIBLE FOR SUBMITTING AN HMA MIX DESIGN NO LATER THAN 10 DAYS PRIOR TO CONSTRUCTION TO THE OWNER OR OWNER REPRESENTATIVE.
- THE CONTRACTOR IS RESPONSIBLE FOR COORDINATING WITH INDOT WITH WORK ADJACENT TO STATE ROW INCLUDING BUT NOT LIMITED TO THE REPLACEMENT OF DAMAGED TRAFFIC SIGNAL LOOPS.
- NEW STRIPING TO MATCH EXISTING STRIPING PATTERNS IN APPLICABLE AREAS UNLESS OTHERWISE NOTED.
- ALL CURB RAMPS AND SIDEWALKS ARE TO BE BUILT TO ADA STANDARDS. REFER TO INDOT STANDARD DRAWING SET E 604-SWCR FOR REFERENCE. CONTRACTOR TO INSTALL CURB RAMPS TO FIT EXISTING CONDITIONS. ANY SIDEWALK REPLACEMENT TO MEET ADA SLOPE REQUIREMENTS TO BE INCLUDED IN CURB RAMP, CONCRETE PAY ITEM. CURB RAMPS TO USE CONCRETE SIDEWALK SECTION DETAIL.
- DETECTABLE WARNING SURFACES SHALL BE INCLUDED IN THE COST OF THE CURB RAMP, CONCRETE ITEM.
- CONCRETE CURB REPLACEMENT AT CURB RAMP LOCATIONS SHALL BE INCLUDED IN THE CURB RAMP, CONCRETE ITEM.
- CONTRACTOR SHALL ENSURE POSITIVE DRAINAGE IN ALL ROADWAYS.
- ASPHALT PATCHING TO BE CONSTRUCTED IN MULTIPLE LIFTS FOR OPTIMAL COMPACTION. LIFTS TO NOT EXCEED 3" IN DEPTH. PATCHING WITHOUT PRE-APPROVAL WILL NOT BE PAID.
- ALL VALVES/CASTINGS WITHIN ROADWAY/CURB/RAMP EXTENTS TO BE MADE FLUSH WITH FINISHED SURFACE.
- CONTRACTOR TO PERMANENT SEED AREAS WHERE GRASS IS DISTURBED.
- CONTRACTOR SHALL NOTIFY OWNER PRIOR TO THE WORK BEING COMPLETED IF A CONTRACT QUANTITY IS NOT SUFFICIENT TO PERFORM THE WORK. CONTRACT QUANTITY OVERAGES WILL NOT BE PAID FOR WITHOUT PRIOR WRITTEN NOTIFICATION TO THE OWNER.
- CONSTRUCTION TRAFFIC TO BE ROUTED THROUGH PENDLETON AVENUE, STATE STREET, OLD STATE ROAD 132, AND ALL STATE ROADS.
- ALL MILLINGS TO BE TAKEN TO THE FALL CREEK GOLF COURSE (250 REFORMATORY ROAD, PENDLETON, IN 46064).



Date	Revisions	Sym.	Designed:	Drawn:	Checked:	Scale:	Date:
			PBR	PBR	MJB		2/20/23

**GENERAL NOTES & DETAILS**  
**ROAD RESURFACING AND REPAIRS**  
**MADISON COUNTY**  
**PENDELTON, INDIANA**

**NOT FOR CONSTRUCTION**

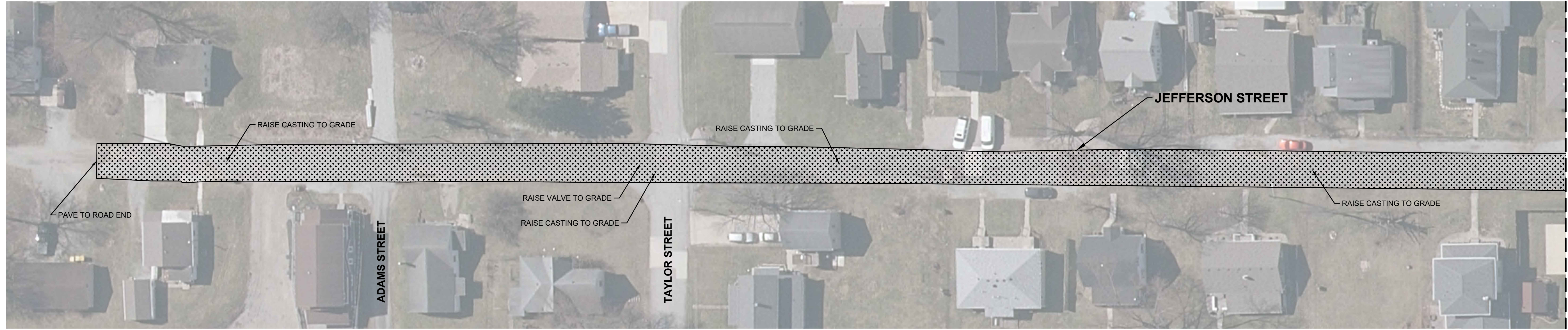
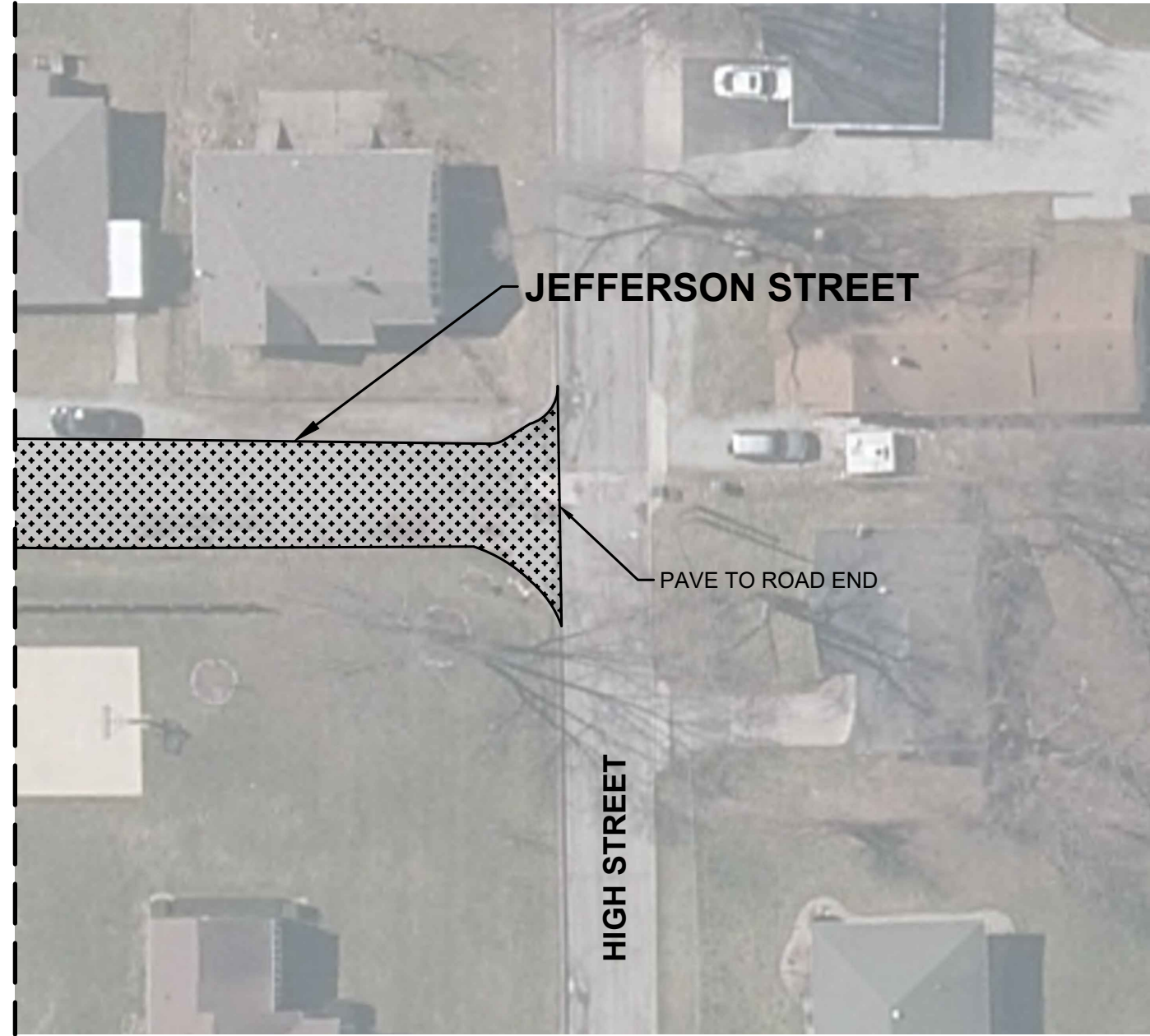
**BANNING ENGINEERING**  
853 COLUMBIA ROAD, SUITE #101  
PLAINFIELD, IN 46168  
BUS: (317) 707-3700, FAX: (317) 707-3800  
E-MAIL: [Banning@BanningEngineering.com](mailto:Banning@BanningEngineering.com)  
WEB: [www.BanningEngineering.com](http://www.BanningEngineering.com)

Project No: 22291

Sheet No:

**C002**

MATCHLINE, SEE ABOVE FOR CONTINUED

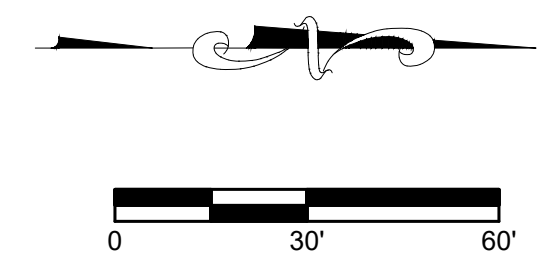
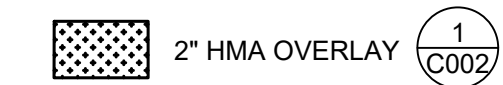


MATCHLINE, SEE BELOW FOR CONTINUED

NOTES:

- 1. CONTRACTOR TO TRANSITION MILL AT CROSS STREETS, DRIVE ENTRANCES, AND END ROADS TO ENSURE SMOOTH DRIVING TRANSITIONS. SEE DETAIL ON SHEET C002. TRANSITION MILLING INCLUDED IN COST OF ASPHALT.
- 2. CONTRACTOR TO RAISE ALL MANHOLES AND VALVES IN ROADWAY TO FINISHED GRADE.

LEGEND



JEFFERSON STREET  
 ROAD RESURFACING AND REPAIRS  
 MADISON COUNTY  
 PENDELTON, INDIANA

NOT FOR CONSTRUCTION

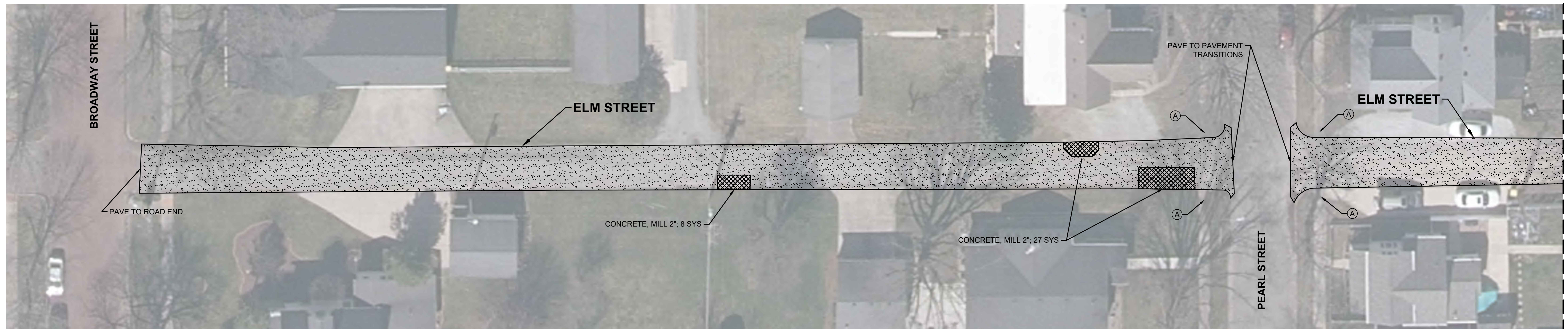
**BANNING**  
 ENGINEERING  
 853 COLUMBIA ROAD, SUITE #101  
 PLAINFIELD, IN 46168  
 BUS: (317) 707-3700, FAX: (317) 707-3800  
 E-MAIL: Banning@BanningEngineering.com  
 WEB: www.BanningEngineering.com

Project No: 22291

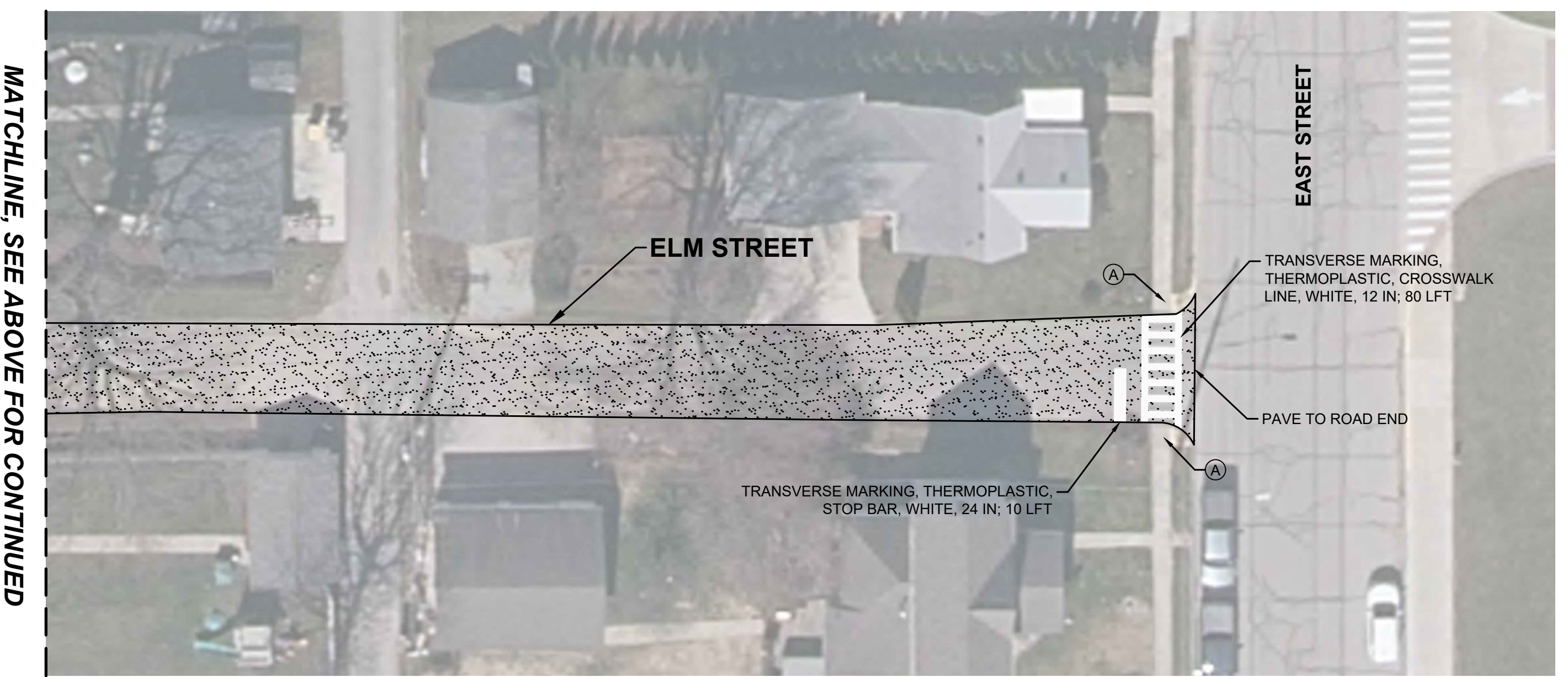
Sheet No:

C100

Designated:	Sym.	Revisions	Date
PBR			
PBR			
MJB			
1" = 30'			
Date:			2/20/23



MATCHLINE, SEE BELOW FOR CONTINUED





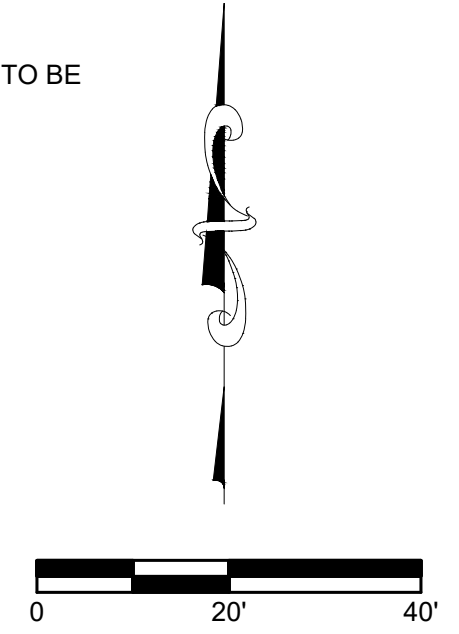
MATCHLINE, SEE ABOVE FOR CONTINUED

**NOTES:**

- CONTRACTOR TO CONFIGURE RAMPS TO ADA COMPLIANCE. SIDEWALK REPLACED TO ACCOMMODATE RAMP INSTALLATION TO BE INCLUDED IN COST OF CURB RAMP, CONCRETE.

**LEGEND**

-  2" MILL AND HMA OVERLAY 1  
C002
-  ADA CURB RAMP



Designated:	Sym.	Revisions	Date
PBR			
PBR			
MJB			
Scale:	1" = 20'		
Date:	2/20/23		

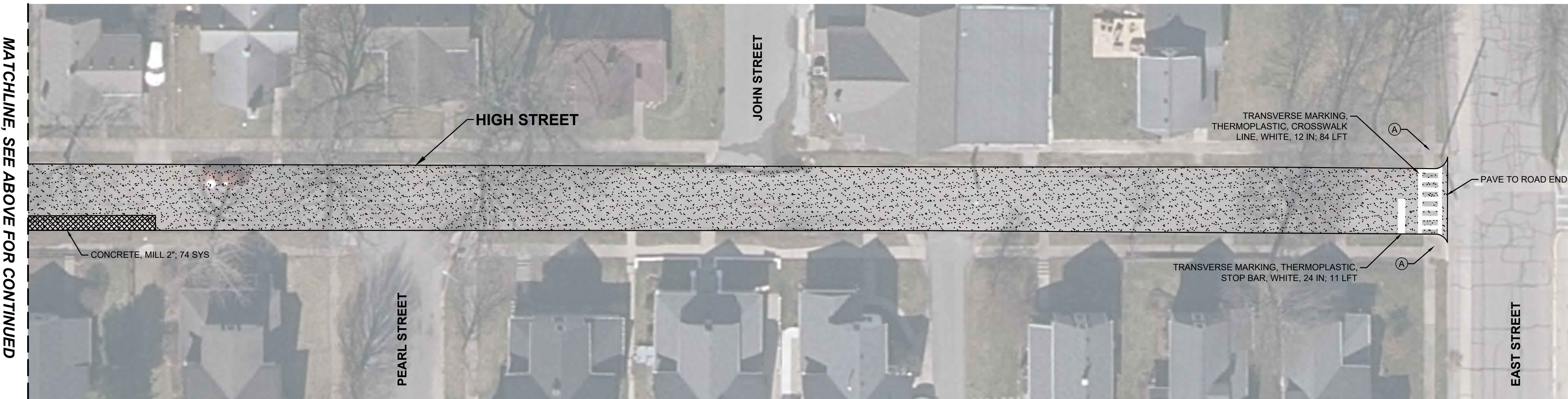
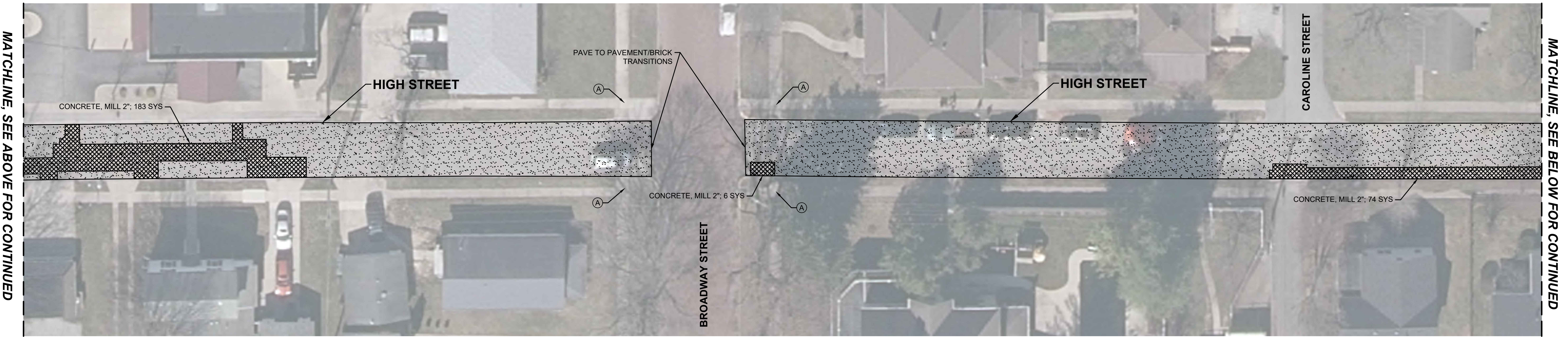
**ELM STREET  
ROAD RESURFACING AND REPAIRS  
MADISON COUNTY  
PENDLETON, INDIANA**

**NOT FOR  
CONSTRUCTION**



**BANNING ENGINEERING**  
853 COLUMBIA ROAD, SUITE #101  
PLAINFIELD, IN 46168  
BUS: (317) 707-3700, FAX: (317) 707-3800  
E-MAIL: [Banning@BanningEngineering.com](mailto:Banning@BanningEngineering.com)  
WEB: [www.BanningEngineering.com](http://www.BanningEngineering.com)

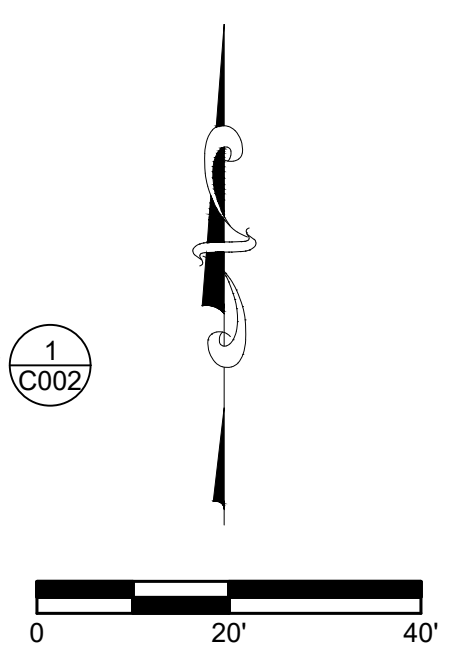
Project No: 22291  
Sheet No:

**C101**



- NOTES:**
- CONTRACTOR TO CONFIGURE RAMPS TO ADA COMPLIANCE. SIDEWALK REPLACED TO ACCOMMODATE RAMP INSTALLATION TO BE INCLUDED IN COST OF CURB RAMP, CONCRETE.

- LEGEND**
-  2" MILL AND HMA OVERLAY (1/0002)
  -  ADA CURB RAMP



**HIGH STREET  
ROAD RESURFACING AND REPAIRS  
MADISON COUNTY  
PENDLETON, INDIANA**

**NOT FOR  
CONSTRUCTION**

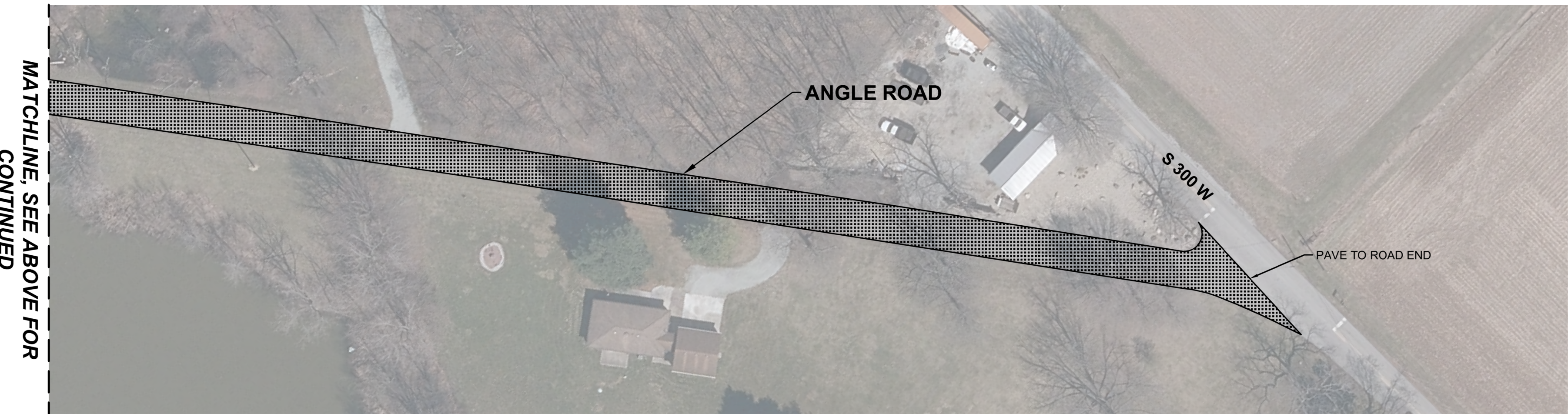
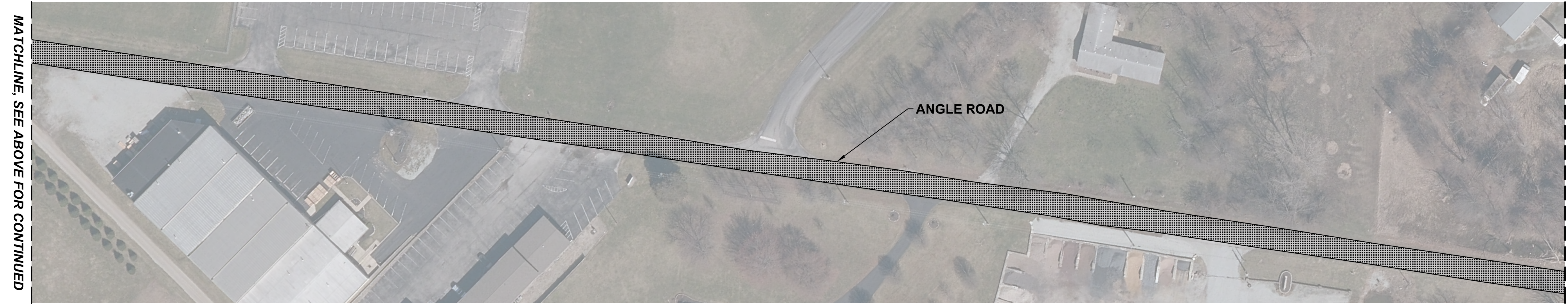
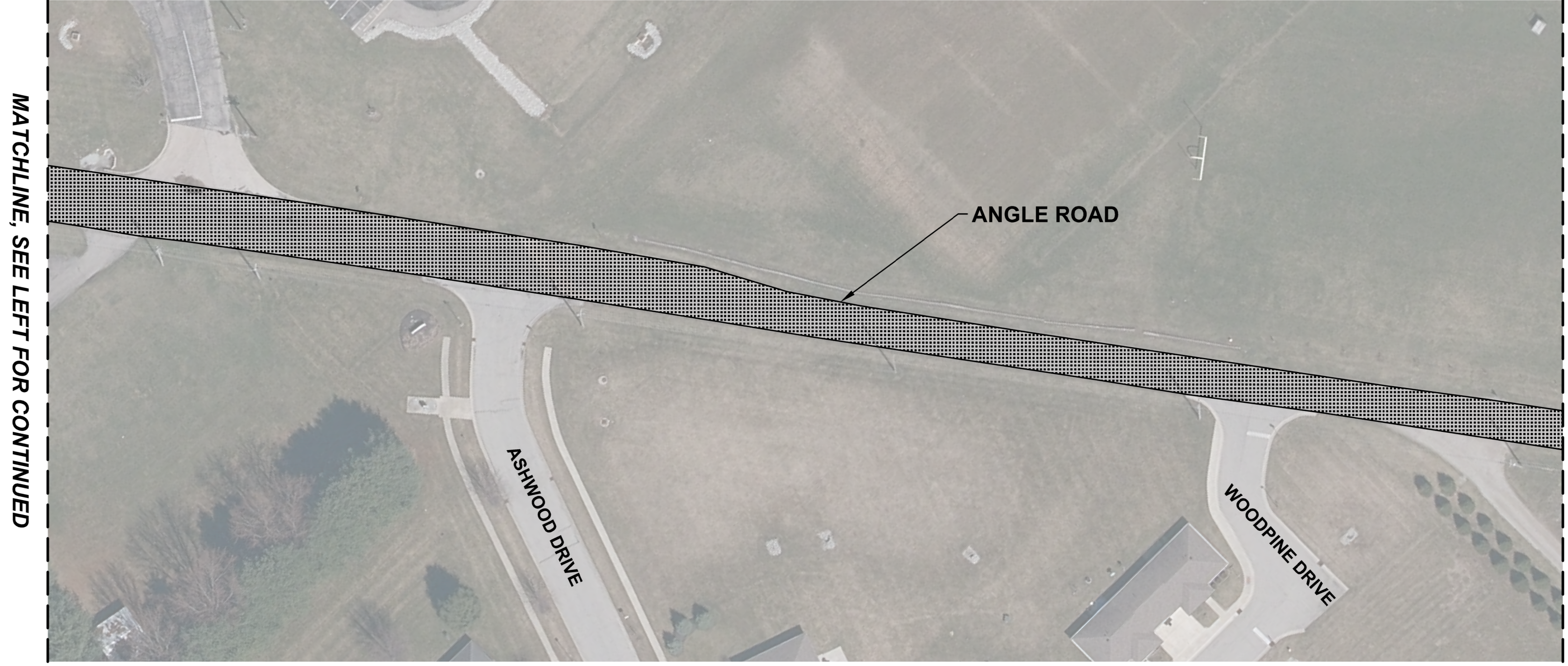
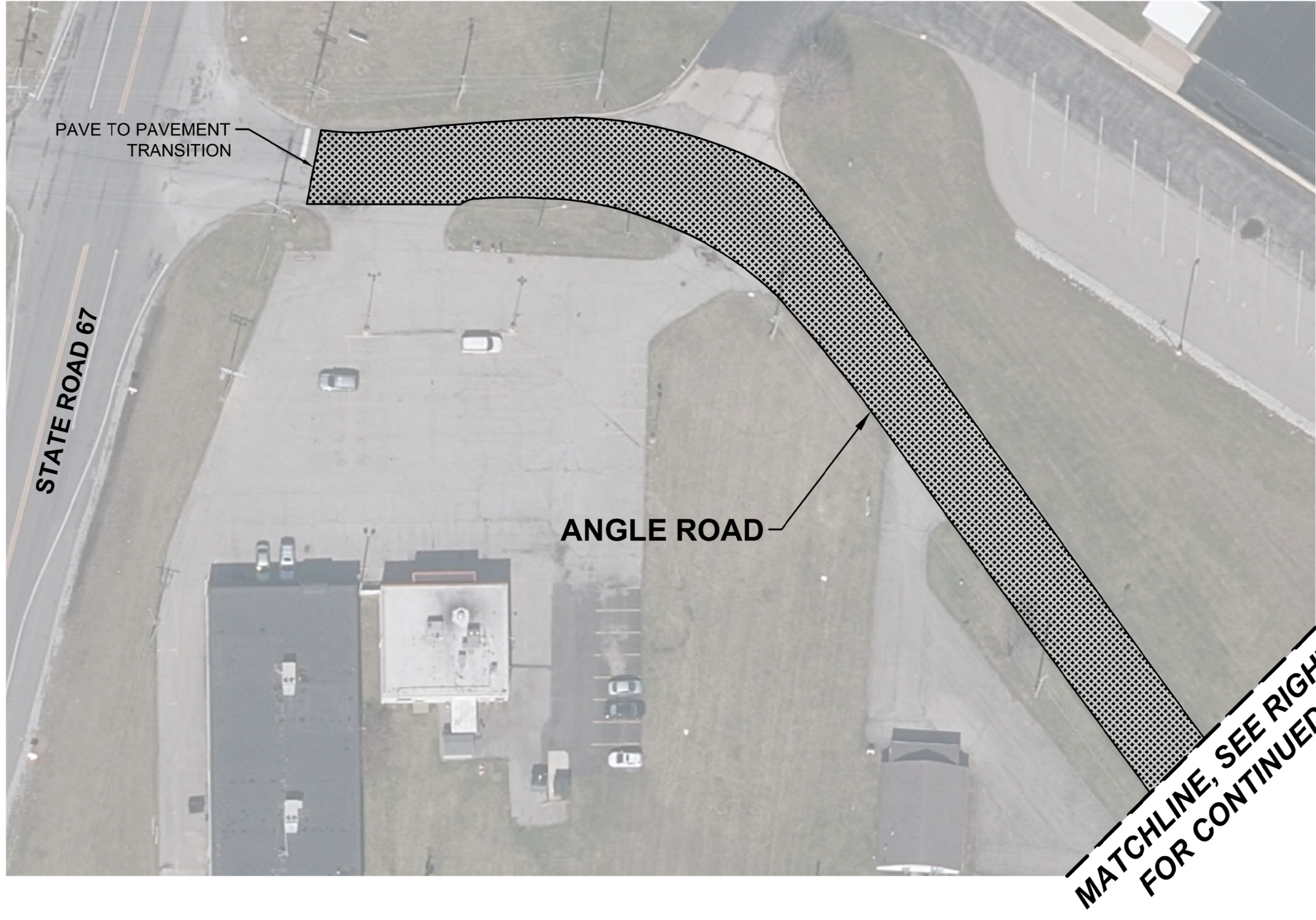
**BANNING  
ENGINEERING**  
853 COLUMBIA ROAD, SUITE #101  
PLAINFIELD, IN 46168  
BUS: (317) 707-3700, FAX: (317) 707-3800  
E-MAIL: [Banning@BanningEngineering.com](mailto:Banning@BanningEngineering.com)  
WEB: [www.BanningEngineering.com](http://www.BanningEngineering.com)

Project No: 22291

Sheet No:

**C102**

Designated:	Sym.	Revisions	Date
PBR			
PBR			
MJB			
Scale:	1" = 20'		
Date:	2/20/23		



MATCHLINE, SEE BELOW FOR CONTINUED

MATCHLINE, SEE ABOVE FOR CONTINUED

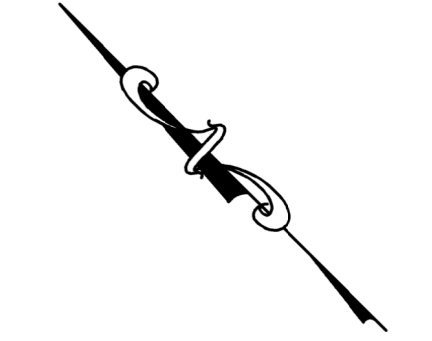
MATCHLINE, SEE BELOW FOR CONTINUED

MATCHLINE, SEE ABOVE FOR CONTINUED

NOTES:  
 1. CONTRACTOR TO TRANSITION MILL AT CROSS STREETS, DRIVE ENTRANCES, AND END ROADS TO ENSURE SMOOTH DRIVING TRANSITIONS. SEE DETAIL ON SHEET C002. TRANSITION MILLING INCLUDED IN COST OF ASPHALT.

**LEGEND**

2" HMA OVERLAY (C002)



Revisions	Date

Designed: PBR  
 Drawn: PBR  
 Checked: MJB  
 Scale: 1" = 50'  
 Date: 2/20/23

ANGLE ROAD  
 ROAD RESURFACING AND REPAIRS  
 MADISON COUNTY  
 PENDELTON, INDIANA

**NOT FOR CONSTRUCTION**

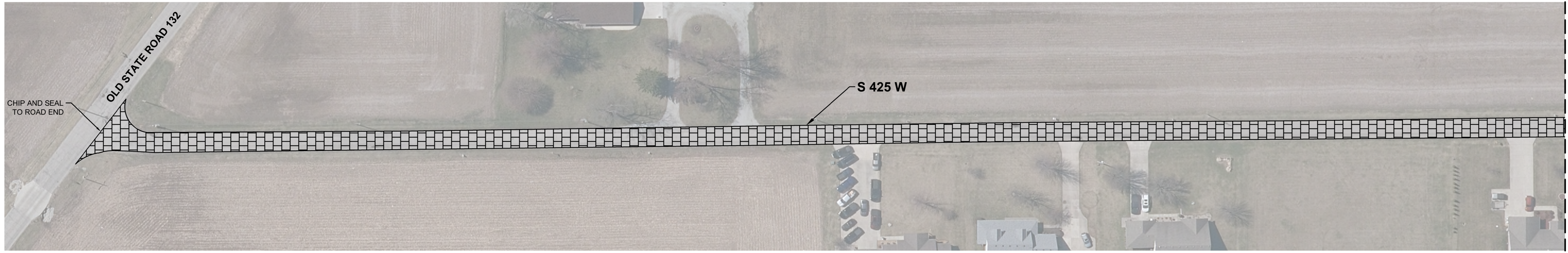
**BANNING ENGINEERING**  
 853 COLUMBIA ROAD, SUITE #101  
 PLAINFIELD, IN 46168  
 BUS: (317) 707-3700, FAX: (317) 707-3800  
 E-MAIL: [Banning@BanningEngineering.com](mailto:Banning@BanningEngineering.com)  
 WEB: [www.BanningEngineering.com](http://www.BanningEngineering.com)

Project No: 22291

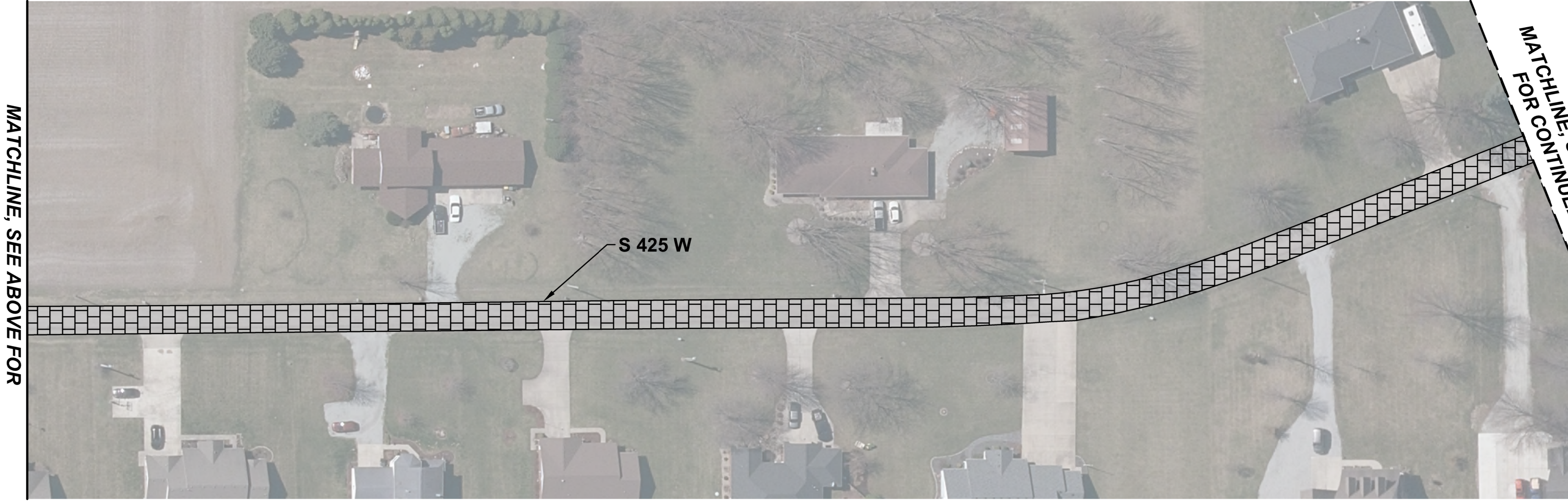
Sheet No:

**C103**

P:\2022\22291\Engineering\Cadd\Sheet\_Files\22291\_425\_W.dwg, Feb. 20, 2023 - 2:30pm

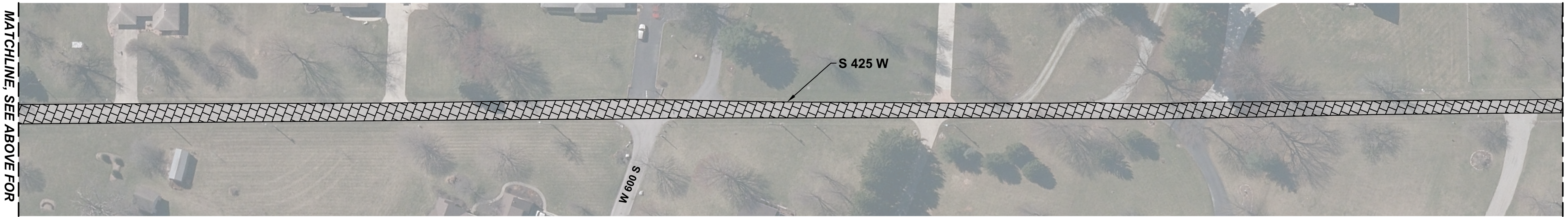


MATCHLINE, SEE BELOW FOR CONTINUED



MATCHLINE, SEE ABOVE FOR CONTINUED

MATCHLINE, SEE BELOW FOR CONTINUED



MATCHLINE, SEE ABOVE FOR CONTINUED

MATCHLINE, SEE BELOW FOR CONTINUED

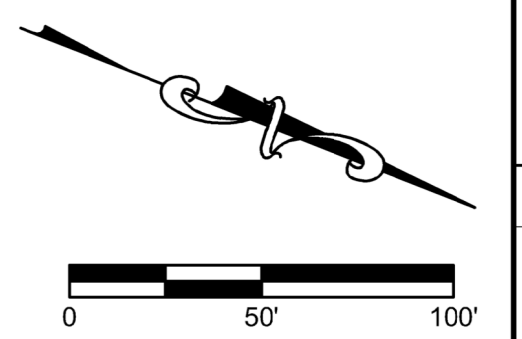


MATCHLINE, SEE ABOVE FOR CONTINUED

**LEGEND**

 CHIP AND SEAL

 3  
C002



Designated:	Sym.	Revisions	Date
PBR			
Drawn:	PBR		
Checked:	MJB		
Scale:	1" = 50'		
Date:	2/20/23		

S 425 W  
 ROAD RESURFACING AND REPAIRS  
 MADISON COUNTY  
 PENDELTON, INDIANA

**NOT FOR CONSTRUCTION**

**BANNING**  
 ENGINEERING  
 8553 COLUMBIA ROAD, SUITE #101  
 PLAINFIELD, IN 46168  
 BUS: (317) 707-3700, FAX: (317) 707-3800  
 E-MAIL: [Banning@BanningEngineering.com](mailto:Banning@BanningEngineering.com)  
 WEB: [www.BanningEngineering.com](http://www.BanningEngineering.com)

Project No: 22291  
 Sheet No: **C104**