

# FALLS PARK PLAYGROUND

FOR ANY QUESTIONS OR  
TO SPEAK WITH SOMEONE  
ABOUT A DONATION PLEASE  
CALL THE PARK OFFICE AT  
**765.778.2222**



**context**  
DESIGN





## LEGEND

1. Restroom Facility
2. Existing Flagpole
3. Existing Sidewalks
4. New Sidewalk / Trail
5. Little Free Library Book Exchange Box
6. Bench Swing
7. Picnic Terrace
8. Picnic Grove

### 2-5 Year Old / Lower Ability

9. Embankment Slide
10. Free Standing Play Element
11. Play Structure
12. Swings
13. Basket Swings

### 5-12 Year Old / Upper Ability

14. Free Standing Play Element
15. Play Structure
16. Large Climbing Element
17. Relocated Large Slide
18. Swings
19. Parkour Course

For any questions or to speak with someone about a donation please call the Park Office at 765.778.2222



## FALLS PARK PLAYGROUND

Site Plan

For any questions or to speak with someone about a donation please call the Park Office at 765.778.2222







**Cozi DOME**  
\$6,400



**PLAY STRUCTURE**  
\$45,500



**OMNI SPINNER**  
\$12,000



**SWINGS**  
\$13,000

**SPINNER BOWL \$2,400**



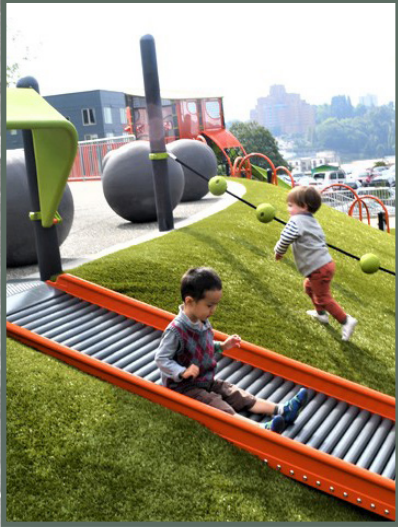
## FALLS PARK PLAYGROUND

2-5 Year Age Play Equipment

For any questions or to speak with someone about a donation please call the Park Office at 765.778.2222







**HILLSIDE ROLLER SLIDE**  
\$10,900



**HILLSIDE ORBS**  
\$2,000



**DUAL BASKET SWINGS**  
\$10,400



**SHADE SHELTER**  
\$66,000

**CRAWL TUNNEL**  
\$7,000



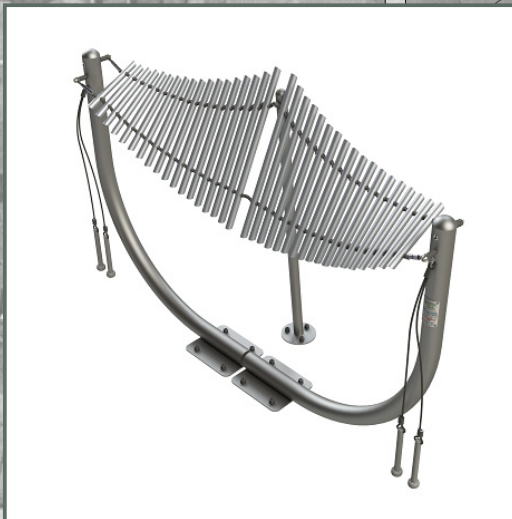




**TUNED DRUMS**  
\$4,600



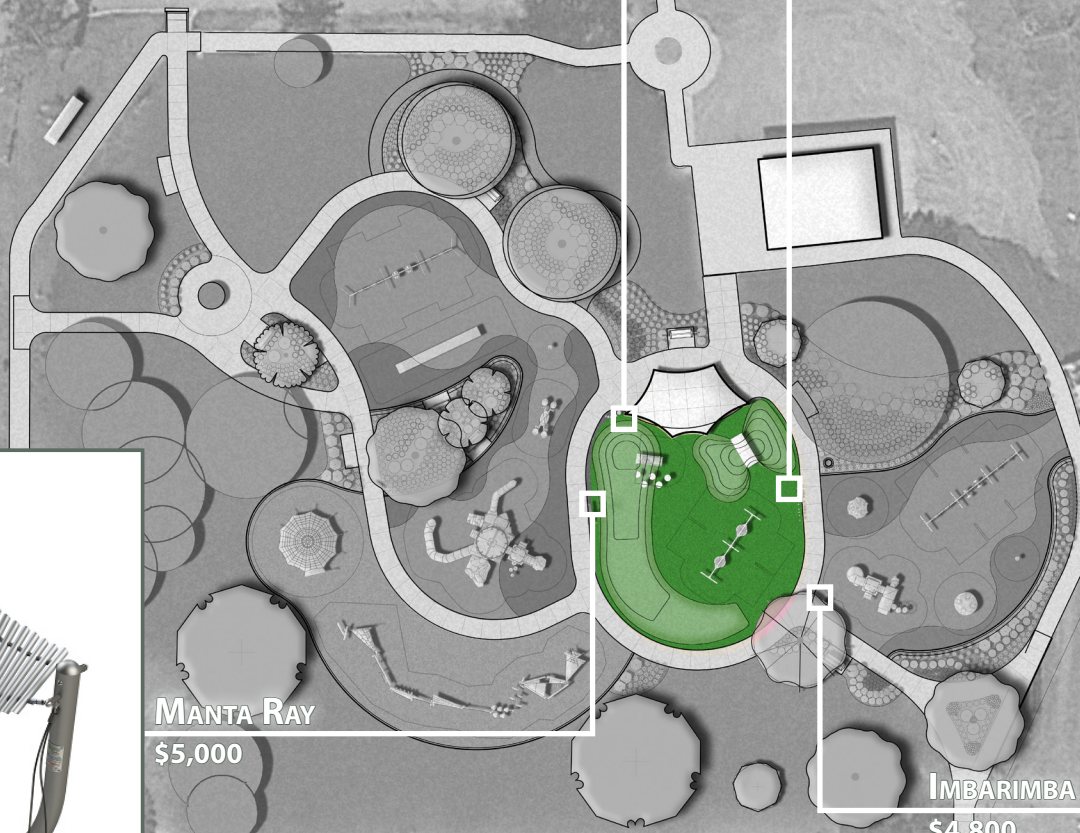
**CONTRABASS CHIMES**  
\$6,800



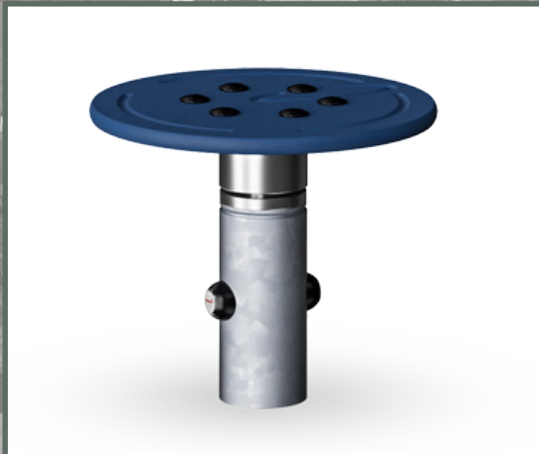
**MANTA RAY**  
\$5,000



**IMBARIMBA**  
\$4,800







**PLATE SPINNER**

\$4,800



**THREE BAY SWINGS**

\$14,200



**PLAY STRUCTURE**

\$284,200



**WE-SAW 4 PERSON SEE-SAW**

\$15,300

**BENCH SWING (QUANTITY OF 6)**

\$3,000



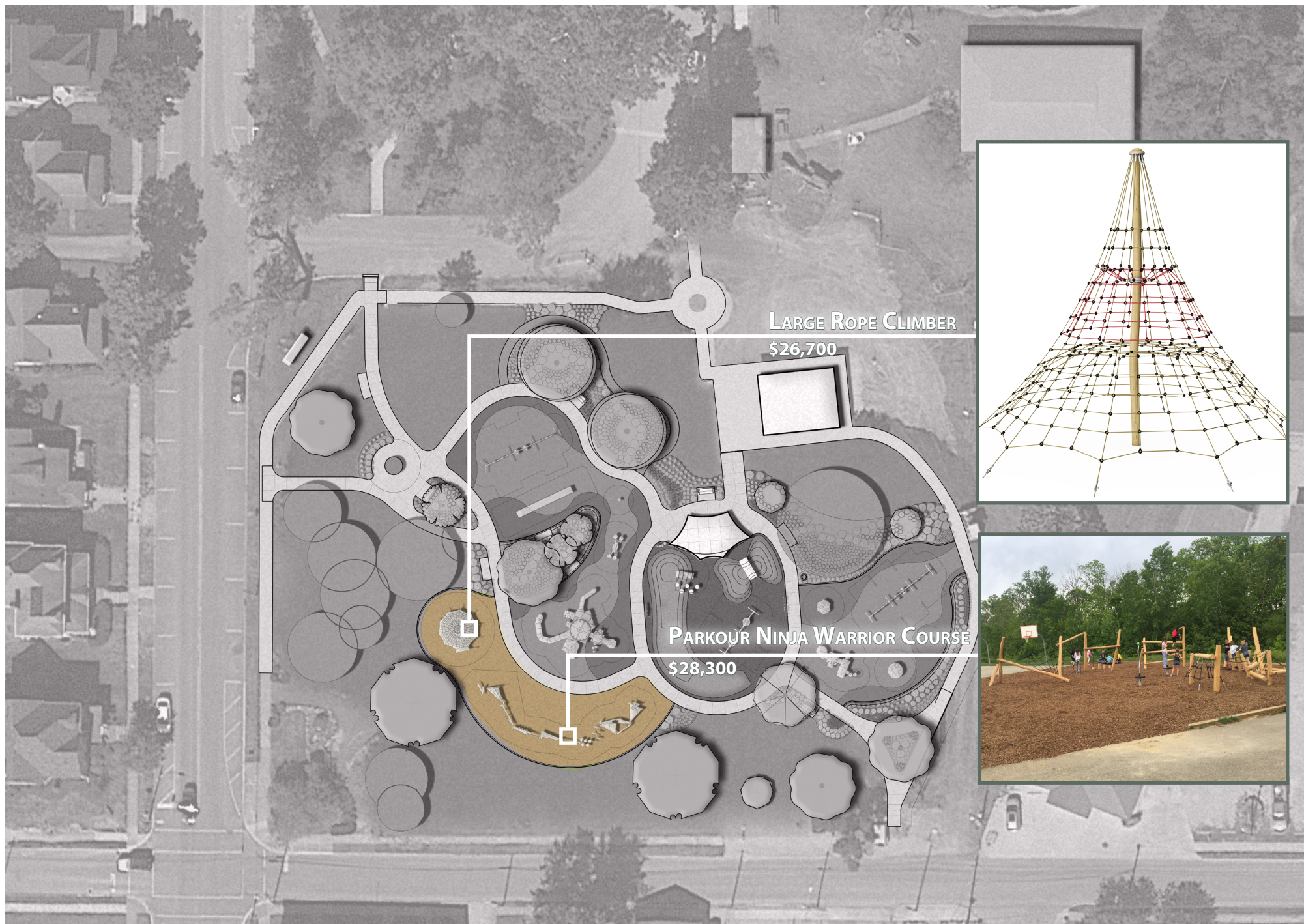
## FALLS PARK PLAYGROUND

5-12 Year Age Play Equipment

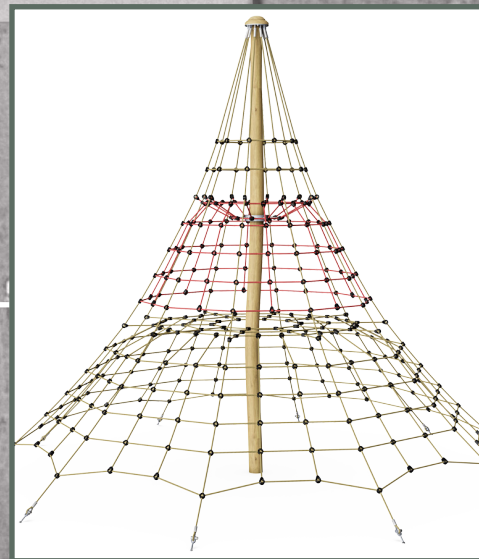
For any questions or to speak with someone about a donation please call the Park Office at 765.778.2222







LARGE ROPE CLIMBER  
\$26,700



PARKOUR NINJA WARRIOR COURSE  
\$28,300



## FALLS PARK PLAYGROUND

5-12 Year Age Play Equipment

For any questions or to speak with someone about a donation please call the Park Office at 765.778.2222

